



Technical specifications and instructions

5CP - Plunger pump

Standard models

5CP2110W

5CP2120W

5CP2140WCS

5CP2150W

Special brass models

5CP2120B

5CP2140BCS

5CP2150B



Specifications (*)

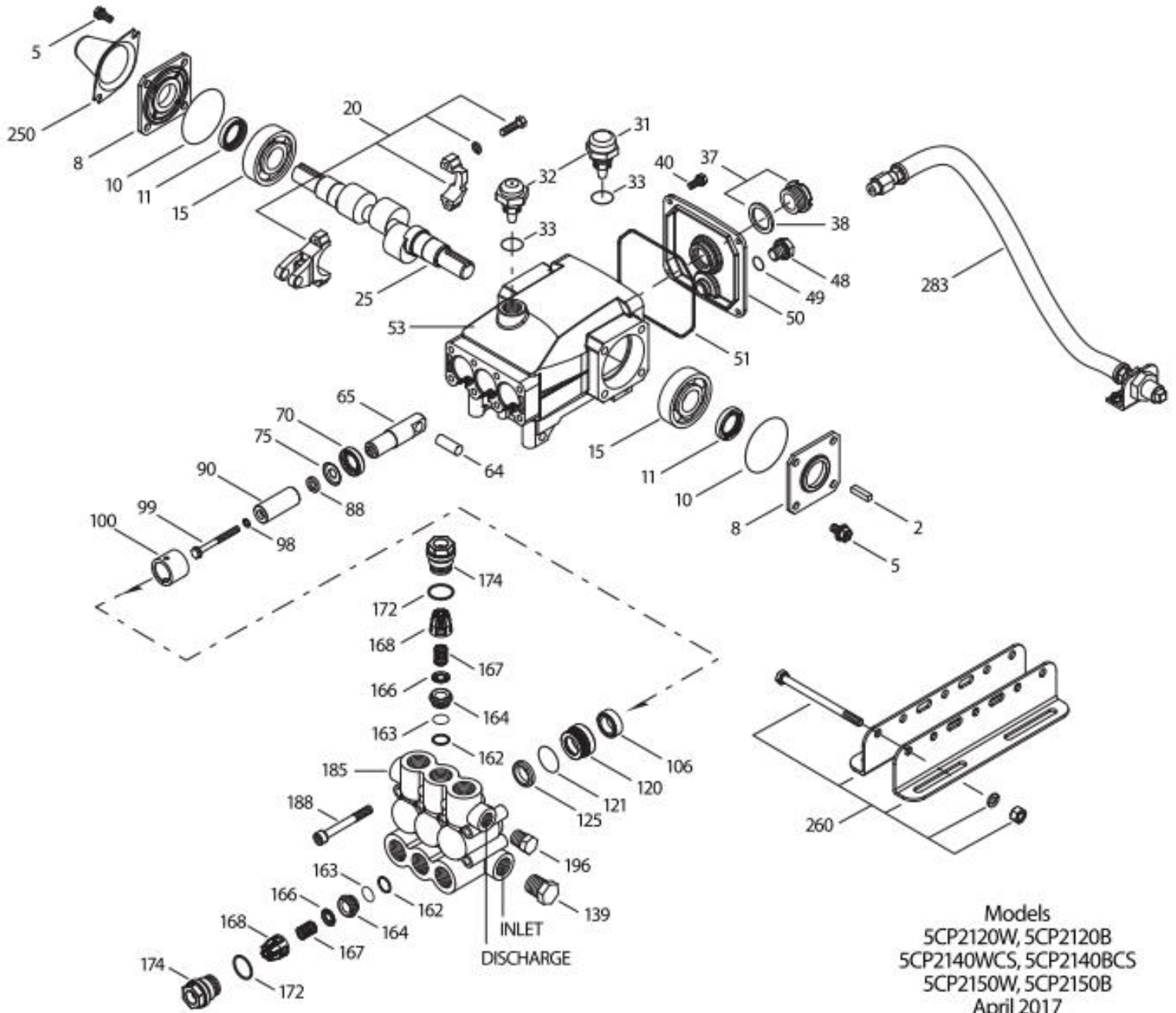
| | Model 5CP2110W | Model 5CP2120W 5CP2120B | Model 5CP2140WCS 5CP2140BCS | Model 5CP2150W 5CP2150B |
|-----------------------|---------------------------------|--|--|--|
| Flow | 8,7 l/min | 15,5 l/min | 13 l/min | 15,5 l/min |
| Pressure range | 7 to 175 bar | 7 to 175 bar | 7 to 175 bar | 7 to 175 bar |
| RPM | 1420 RPM | 950 RPM | 1420 RPM | 1420 RPM |
| Stroke | 7,2 mm | 18 mm | 10 mm | 12 mm |

Common specifications

| | |
|-----------------------------------|--------------------|
| Inlet pressure range | Flooded to 4 bar |
| Bore | 20 mm |
| Crankcase capacity | 0,51 L |
| Maximum liquid temperature | 71° C |
| Inlet ports (2) | 1/2" NPTF |
| Discharge ports (2) | 3/8" NPTF |
| Shaft diameter | 20 mm |
| Weight | 8,7 kg |
| Dimensions | 263 x 254 x 147 mm |

(*) Abnormalities permitted only after consultation and written confirmation from Cat Pumps.

Exploded View



Parts list

| Item | Num. | Mat. | Description | Qty |
|------|--------------|------------|--|-------|
| 2 | 30057 | STL | Key (M6x6x25) | 1 |
| 5 | 126542 | STCP R | Screw, sems HHC (M8x16) | 8 |
| 8 | 46910 | AL | Cover, bearing | 2/1/2 |
| 10 | 14028 | NBR | O-ring, bearing cover – 70D | 2 |
| 11 | 43222 | NBR | Seal, oil, crankshaft – 70D | 2/1/2 |
| 15 | 14480 | STL | Bearing, ball | 2 |
| 20 | 48742 | TNM | Rod, Connecting assy {10/01} | 3 |
| 25 | 48395 | FCM | Crankshaft, dual end – 5CP2110W | 1 |
| | 46928 | FCM | Crankshaft, dual end – 5CP2120W-5CP2120B | 1 |
| | 48203 | FCM | Crankshaft, single end – 5CP2140WCS-5CP2140BCS | 1 |
| | 46982 | FCM | Crankshaft, dual end – 5CP2150W-5CP2150B | 1 |
| 30 | 48224 | AL | Cover, bearing blind – 5CP2140WCS-5CP2140BCS | 1 |
| 32 | 46798 | - | Cap, oil filler, domed | 1 |
| 33 | 14179 | NBR | O-ring, oil filler cap – 70D | 1 |
| 37 | 92241 | - | Gauge, oil, bubble w/gasket – 80D | 1 |
| 38 | 44428 | NBR | Gasket, flat, oil gauge – 80D | 1 |
| 40 | 125824 | STCP R | Screw, sems HHC (M6x16) | 4 |
| 48 | 25625 | STCP | Plug, drain (1/4" x 19 BSP) | 1 |
| 49 | 23170 | NBR | O-ring, drain plug – 70D | 1 |
| 50 | 46940 | AL | Cover, rear | 1 |
| 51 | 14044 | NBR | O-ring, rear cover | 1 |
| 53 | 48617 | AL | Crankcase | 1 |
| 64 | 46746 | CM | Pin, crosshead | 3 |
| 65 | 48458 | BBNP | Rod, plunger | 3 |
| 70 | 46838 | NBR | Seal, oil, crankcase – 70D | 3 |
| 75 | 43328 | S | Slinger, barrier | 3 |
| 88 | 45697 | S | Washer, keyhole (M18x10) | 3 |
| 90 | 46841 | CC | Plunger (M20x50) | 3 |
| 98 | 46730 | NBR | Washer, seal – 90D | 3 |
| | 48394 | FPM | Washer, seal – 90D | 3 |
| | # 48432 | EPDM | Washer, seal | 3 |
| 99 | + 48201 | SS | Retainer, plunger s/stud (M6) | 3 |
| 100 | 46749 | PVDF | Retainer, seal | 3 |
| 106 | 43305 | NBR | Seal, LPS w/S-Spg | 3 |
| | 45153 | FPM | Seal, LPS w/SS-Spg | 3 |
| | # 48429 | EPDM | Seal, LPS w/SS-Spg | 3 |
| | 76305 | ST2 | Seal, LPS w/SS-Spg | 3 |
| 120 | 46843 | BB | Case, seal | 3 |
| | 49436 | BB | Case, seal (use w/76305, 13978) | 3 |
| 121 | 13978 | NBR | O-ring, seal case – 70D | 3 |
| | 14329 | FPM | O-ring, seal case | 3 |
| | # 48904 | EPDM | O-ring, seal case | 3 |
| 125 | 43307 | SNG | Seal, HPS w/S | 3 |
| | 44936 | FPM | Seal, HPS w/SS | 3 |
| | 46667 | HT | Seal, HPS, 2-pc w/S-Support | 3 |
| 139 | 22179 | BBCP | Plug, inlet (1/2"NPTM) | 1 |
| 162 | 48361 | D | Back-up-ring, seat | 6 |
| 163 | 43358 | NBR | O-ring, seat – 70D | 6 |
| | 44938 | FPM | O-ring, seat – 70D | 6 |
| | # 48908 | EPDM | O-ring, seat | 6 |
| 164 | 43725 | S | Seat | 6 |
| 166 | 43723 | S | Valve | 6 |
| 167 | 43750 | S | Spring | 6 |

| | | | | |
|-----|---------|--------|---|---|
| 168 | 44565 | PVDF | Retainer, spring | 6 |
| 172 | 17615 | NBR | O-ring, valve plug – 75D | 6 |
| | 15855 | FPM | O-ring, valve plug – 70D | 6 |
| | # 48431 | EPDM | O-ring, valve plug – 75D | 6 |
| 174 | 43849 | BBCP | Plug, valve | 6 |
| 185 | 48245 | W770 | Manifold, head – W770 | 1 |
| | 49716 | SBCP | Manifold, head – Special brass | 1 |
| 188 | 126513 | STCP R | Screw, HSH (M8x70) | 8 |
| 196 | 22187 | BBCP | Plug, discharge (3/8"NPTM) | 1 |
| 250 | 118672 | STCP | Protector, shaft | 1 |
| 255 | 30243 | STZP | Mount, direct (not shown) | 1 |
| 260 | 30611 | STZP R | Mounting, angle rail (belt drive only) | 1 |
| | 30637 | STZP | Mount, angle assy-retro fit (see TB 078) | 1 |
| 265 | 30659 | - | Mount, assy (incls 30611, 30633, 118672) | 1 |
| 275 | 30944 | STL | Hub & key assy (incls 30057, 30945) | 1 |
| 283 | 34334 | - | Kit, oil drain (3/8"x 24")(see individual data sheet) | 1 |
| | 76334 | - | Kit, oil level indicator (3/8"x24") (see individual data sheet) | 1 |
| 299 | 816650 | W770 | Head, complete – W770 w/NBR seals & O-rings | 1 |
| | 818472 | SBCP | Head, complete – special brass w/NBR seals & O-rings | 1 |
| 300 | 33628 | NBR | Kit, seal (incls. 98, 106, 121, 125) standard | 1 |
| | 31628 | FPM | Kit, seal (incls. 98, 106, 121, 125) | 1 |
| | # 31648 | EPDM* | Kit, seal (incls. 98, 106, 121, 125) | 1 |
| | 31638 | HT | Kit, seal (incls. 98, 106, 121, 125) | 1 |
| | 76536 | STHT | Kit, seal (incls. 98, 106, 120, 121, 125) | 1 |
| 310 | 30821 | NBR | Kit, valve (incls: 162, 163, 164, 166, 167, 168, 172) standard | 2 |
| | 31821 | FPM | Kit, valve (incls: 162, 163, 164, 166, 167, 168, 172) | 2 |
| | # 31162 | EPDM | Kit, valve (incls: 162, 163, 164, 166, 167, 168, 172) | 2 |

Bold print numbers are unique to a particular pump model. Italics are optional items. # Silicone oil/grease required.
+ Production parts are different than service parts. R Components comply with RoHS directive. { } Date of latest production change. W770 effective with 97 production. * Review individual parts in each kit for material code identification.
Review 'Tech Bulletins' 002, 003, 024, 036, 043, 053, 060, 061, 064, 073, 074, 078, 083 and 103 for additional information.

Material codes: (not part or part number)

| | | | | | |
|------|-------------------------------|------|-------------------------------|------|------------------------|
| AL | Aluminum | FCM | Forged chrome-moly | SS | 316 stainless steel |
| BB | Brass | FPM | Fluorocarbon | ST2 | Special PTFE 2 |
| BBCP | Brass / chrome plated | HT | Hi-Temp (EPDM alternative) | STCP | Steel / chrome plated |
| BBNP | Brass nickel plated | NBR | Medium nitrile (Buna-N) | STHT | Special PTFE high temp |
| CC | Ceramic | PVDF | Polyvinylidene fluoride | STL | Steel |
| CM | Chrome-moly | S | 304 stainless steel | STZP | Steel / zinc plated |
| D | Ecetal | SBCP | Special brass / chrome plated | TNM | Special high strength |
| EPDM | Ethylene propylene diene mon. | SNG | Special blend (Buna) | W770 | Special alloy |