

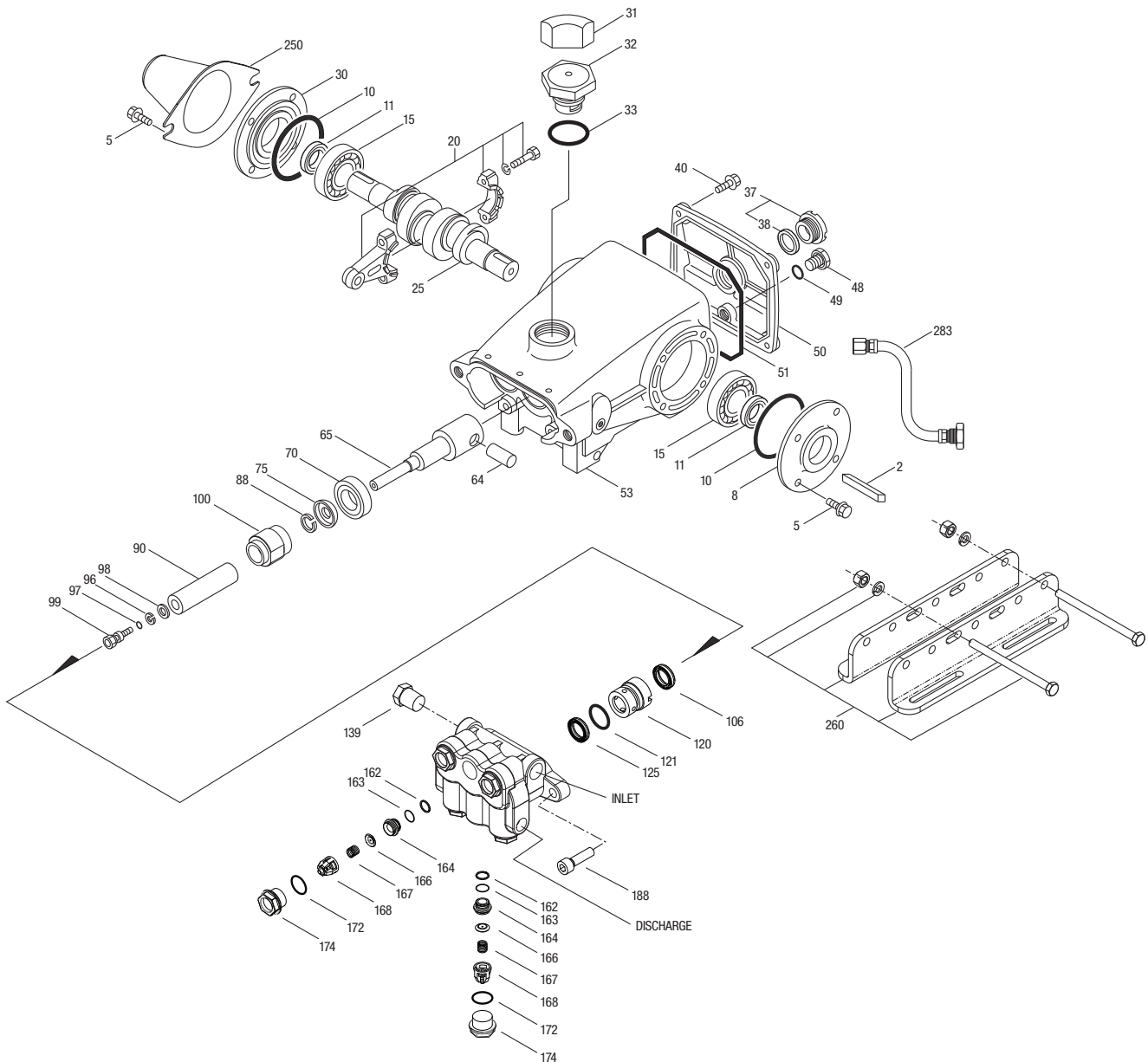
MODEL 310.C02



Specifications	U.S. Measure	Metric Measure
Flow	1.75 gpm	6.62 lpm
Pressure Range	400 to 2200 psi	28 to 152 bar
Max. RPM	450	450
*Inlet Pressure	300 to 700 psi	21 to 48 bar
Crankcase Capacity	18 oz.	0.551
Dimensions	11.73 x 10.0 x 5.24"	298 x 254 x 133mm
Weight	19.8 lbs.	9 kg

* Temperature and pressure must be maintained to keep incoming CO2 in a liquid state.

EXPLODED VIEW



May 2014

(Parts List on Reverse Side)

PARTS LIST

ITEM	PN	MATL	DESCRIPTION	QTY	ITEM	PN	MATL	DESCRIPTION	QTY
2	30057	STL	Key (M6x6x25)	1	100	701765	SS	Retainer, Seal	3
5	125824	STCP R	Screw, HHC Sems (M6 x 16)	8	106	701763	SFTA	Seal, LPS w/NIH-Spg	3
8	43344	AL	Covering, Bearing	2	120	45679	BB	Case, Seal	3
10	43343	NBR	O-Ring, Bearing Cover - 70D	2	121	14200	NBR	O-Ring, Seal Case - 70D	3
11	43222	NBR	Seal, Oil, Crankshaft	2	125	701764	SFTA	Seal, HPS w/NIH-Spg	3
15	14480	STL	Bearing, Ball	2	139	22179	BBCP	Plug, Inlet (1/2"NPT(M))	1
20	45883	HS	Rod, Connecting Assy	3	162	48361	D	Back-up-Ring, Seat	6
25	43342	FCM	Crankshaft, Dual End (M18)	1	163	43358	NBR	O-Ring, Seat - 70D	6
31	828710	PE	Protector, Oil Cap w/Polyurethane Gasket	1	164	43725	S	Seat	6
32	43211	ABS	Cap, Oil Filler	1	166	43723	S	Valve	6
33	14177	NBR	O-Ring, Oil Filler Cap - 70D	1	167	43750	S	Spring	6
37	92241	—	Gauge, Oil, Bubble w/Gasket	1	168	44565	PVDF	Retainer, Spring	6
38	44428	NBR	Gasket, Flat, Oil Gauge	1	172	17615	NBR	O-Ring, Valve Plug - 75D	6
40	126541	STCP R	Screw, HHC Sems (M6 x 20)	4	174	43849	BBCP	Plug, Valve	6
48	25625	STCP	Plug, Drain (1/4" x 19BSP)	1	185	44837	BBCP	Head, Manifold	1
49	23170	NBR	O-Ring, Drain Plug - 70D	1	188	126520	STCP R	Screw, HSH Sems (M10 x 35)	2
50	48772	AL	Cover, Rear	1	250	118672	STCP	Protector, Shaft	1
51	48773	NBR	O-Ring, Rear Cover - 70D	1	255	30243	STZP	Mount, Direct	1
53	48769	AL	Crankcase	1	260	30611	STZP R	Mount, Rail Assembly	1
64	43351	CM	Pin, Crosshead	3	275	30944	STL	Hub,"B" (35mm w/keyway)	1
65	43365	ZZCP	Rod, Plunger	3	283	34334	—	Kit, Oil Drain (3/8" x 48")	1
70	43228	NBR	Seal, Oil, Crankcase	3	299	810027	BBCP	Head, Complete	1
75	43328	S	Slinger, Barrier	3	300	76152	NBR *	Kit, Seal (Incls: 97, 106, 121, 125)	1
88	45697	S	Washer, Keyhole (M18 x 10)	3	310	30821	NBR	Kit, Valve Preassembled (Incls:162-164, 166-168, 172)	2
90	43367	CC	Plunger (M20 x 72)	3	—	6107	—	Oil, Bottle (21 oz.) ISO-68 Hydraulic (Fill to specified crankcase capacity prior to start-up)	1
96	43235	PTFE	Back-up-Ring, Plunger Retainer	3					
97	17399	NBR	O-Ring, Plunger Retainer - 80D	3					
98	45891	CU	Gasket, Plunger Retainer	3					
99	104360	S	Retainer, Plunger w/stud	3					

⚠ CAUTIONS AND WARNINGS

All High Pressure Systems require a primary pressure regulating device (i.e. regulator, unloader) and a secondary pressure relief device (i.e. pop-off valve, relief valve). Failure to install such relief devices could result in personal injury or damage to pump or property. CAT PUMPS does not assume any liability or responsibility for the operation of a customer's high pressure system.

Read all CAUTIONS and WARNINGS before commencing service or operation of any high pressure system. The CAUTIONS and WARNINGS are included in each service manual and with each Accessory Data sheet. CAUTIONS and WARNINGS can also be viewed online at www.catpumps.com/cautions-warnings or can be requested directly from CAT PUMPS.

WARRANTY

View the Limited Warranty on-line at www.catpumps.com/warranty.

**Review individual parts in each kit for material code identification.*

Italics are optional items. R Components comply with RoHS Directive. See Tech Bulletins 003, 024, 036, 074, and 083.

MATERIAL CODES (Not Part of Part Number):

ABS=ABS Plastic AL=Aluminum BB=Brass BBCP=Brass/Chrome Plated

CC=Ceramic CM=ChromeMoly D=Acetal FBR=Fiber

FCM=Forged Chrome-Moly HS=High Strength

NBR=Medium Nitrile (Buna-N) NIH= High Nickle Alloy PE=Polyethylene

PTFE=Pure Polytetrafluoroethylene PVDF=Polyvinylidene Fluoride

S=304SS SS=316SS SFTA=Special Blend PTFE TAW

STCP=Steel/Chrome Plated STL=Steel STZP=Steel/Zinc Plated

ZZ CP=Chrome Plated/Steel-Zamak



CAT PUMPS

1681 - 94TH LANE N.E. MINNEAPOLIS, MN 55449-4324

PHONE (763) 780-5440 — FAX (763) 780-2958

e-mail: techsupport@catpumps.com

www.catpumps.com