

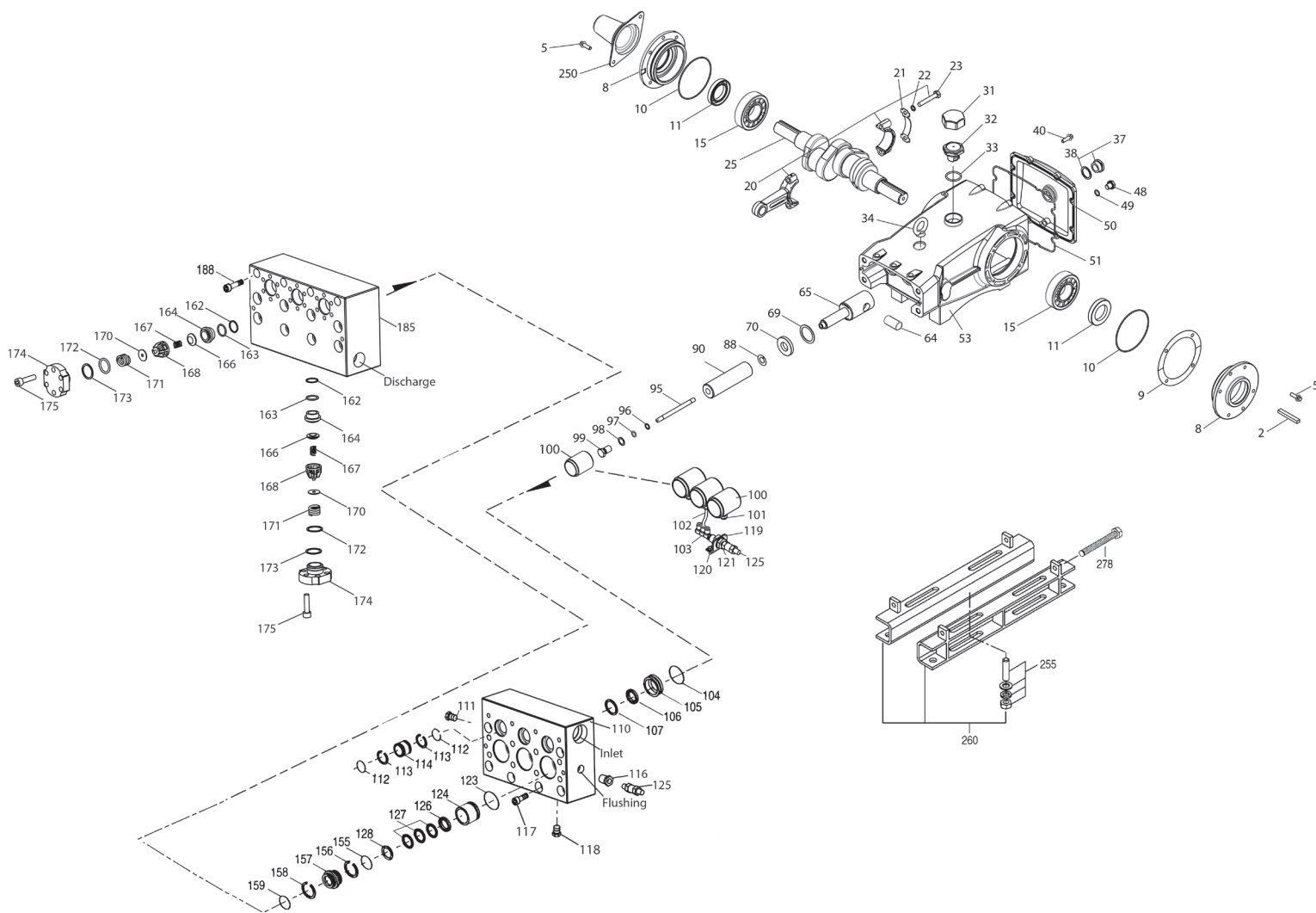
MODEL 3801KM.CO2



Specifications	U.S. Measure	Metric Measure
Flow	3.5 gpm	13.2 lpm
Pressure Range	100 to 5000 psi	7 to 345 bar
Max. RPM	450	450
*Inlet Pressure	300 to 700 psi	21 to 48 bar
Crankcase Capacity	4.2 Qts.	4 l
Dimensions	24.72 x 18.11 x 9.37"	628 x 460 x 238mm
Weight	170 lbs.	77 kg

*Temperature and pressure must be maintained to keep incoming CO2 in a liquid state.

EXPLODED VIEW



May 2014

(Parts List on Reverse Side)

PARTS LIST

ITEM	PN	MATL	DESCRIPTION	QTY	ITEM	PN	MATL	DESCRIPTION	QTY
2	34021	STL	Key (M10x8x70)	1	113	701319	PTFE	Back-up-Ring, Inlet Spacer	6
5	125753	S	Screw, HH Sems (M8x25)	8	114	701317	SS	Spacer, Inlet	3
8	44542	AL	Covering, Bearing	2	116	998032	SS	Bushing (1/2"NPT[M] x 1/4"NPT[F])	1
9	815279	FBR	Shim, Split 2-Pc	0-2	117	701252	SS	Screw, HSH (M14x100)	4
10	12398	NBR	O-Ring, Bearing Cover - 70D	2	118	701077	SS	Plug (1/4"NPT[M])	3
11	13296	NBR	Seal, Oil, Crankshaft	2	119	34347	STZP	Bracket	1
15	29326	STL	Bearing, Roller	2	120	990776	STZP R	Screw, HHC (1/4"- 20 x 1/2")	2
20	761467	TNM	Assembly, Connecting Rod (Incls: 21,22,23)	3	121	34338	BB	Union (1/4"NPT[M])	1
21	126749	STCP R	Washer, Locking (M10)	3	123	12391	NBR	O-Ring, V-Packing Cylinder - 70D	3
22	126593	STCP R	Shim, Washer (M10.5x1.5)	6	124	701336	SS	Cylinder, V-Packing	3
23	122045	STZP	Screw, HH (M10x55)	6	125	33937	SS	Valve, Check (1/4"NPT[M])	2
25	29325	FCM	Crankshaft, Dual End (M48)	1	126	44164	SS	Adapter, Female	3
31	828710	PE	Protector, Oil Cap w/Polyurethane Gasket	1	127	44607	STG	V-Packing	9
32	43211	ABS	Cap, Oil Filler	1	128	44165	SS	Adapter, Male	3
33	14177	NBR	O-Ring, Oil Filler Cap - 70D	1	155	17622	NBR	O-Ring, V-Packing Spacer - 85D	3
34	126743	STCP R	Bolt, Eye (M12x1.75) (For Lifting Pump Only)	1	156	28675	PTFE	Back-up-Ring, V-Packing Spacer	3
37	92241	—	Gauge, Oil, Bubble w/Gasket	1	157	701352	SS	Spacer, V-Packing	3
38	44428	NBR	Gasket, Flat, Oil Gauge	1	158	28675	PTFE	Back-up-Ring, V-Packing Spacer	3
40	125753	S	Screw, HH Sems (M8x25)	8	159	17622	NBR	O-Ring, V-Packing Spacer - 85D	3
48	25625	STCP	Plug, Drain (1/4"x19BSP)	1	162	21985	PTFE	Back-up-Ring, Seat	6
49	23170	NBR	O-Ring, Drain Plug - 70D	1	163	26089	NBR	O-Ring, Seat - 80D	6
50	45936	AL	Cover, Rear	1	164	44080	SS	Seat	6
51	16612	NBR	O-Ring, Rear Cover - 70D	1	166	44081	SS	Valve	6
53	44487	AL	Crankcase Assy (Incls: 34,54)	1	167	44082	SS	Spring	6
54	27488	S	Pin, Guide	2	168	44735	PVDF	Retainer, Spring	6
64	763864	CM	Pin, Crosshead	3	170	44794	SS	Washer, Spring	6
65	765118	SSZZ	Rod, Plunger	3	171	44793	SS	Spring, Coil	6
69	126587	STCP R	Washer, Oil Seal	3	172	15853	NBR	O-Ring, Valve Plug - 70D	6
70	100488	NBR	Seal, Oil, Crankcase	3	173	20224	PTFE	Back-up-Ring, Valve Plug	6
88	45675	S	Washer, Keyhole	3	174	701260	SS	Plug, Valve	6
90	43945	CC	Plunger (M20x145)	3	175	87951	S	Screw, HSH, Valve Plug (M10x30)	36
95	89779	S	Stud, Plunger Retainer (M7 x 123)	3	185	701314	SS	Manifold, Discharge, Block-Style	1
96	20184	PTFE	Back-up-Ring, Plunger Retainer	3	188	701279	S	Screw, HSH (M12x100)	12
97	14190	NBR	O-Ring, Plunger Retainer - 70D	3	250	44516	NY	Protector, Shaft	1
98	44069	SS	Gasket, Plunger Retainer	3	255	34039	S	Mount, Direct	1
99	44068	SS	Retainer, Plunger (M7)	3	260	92674	STZP R	Mount, Rail Assembly	1
100	999324	AL	Retainer, Seal	3	275	990013	STL	Hub,"B" (35mm w/keyway)	1
101	999490	D	Adapter, 1/4"	3	278	80540	ZP	Screw,HH (M12x100) (Rail Adjusting Screw)	2
102	999492	NY	Tubing, 1/4"	3	283	34314	—	Kit, Oil Drain (3/8"x48") (Not Shown)	1
103	999491	PLM	Manifold (3"x1/4"NPT[M])	1	290	6124	—	Gasket, Liquid (3 oz.)	1
104	43875	NBR	O-Ring, Inlet Adapter - 70D	3	299	901389	SS	Head, Complete	1
105	701344	SS	Adapter, Inlet	3	300	76786	NBR*	Kit, Seal (Incls: 97,104,106,112,113, 123,127,155,156,158,159)	1
106	701974	SFTB	Seal, LPS, NIH-Spg	3	310	34151	NBR	Kit, Valve Preassembled (Incls:162-164,166-168,170-173)	2
107	44074	SS	Washer, LPS	3	—	6100	—	Oil, Case (12-21 oz. Bottles)	1
110	701286	SS	Manifold, Inlet, Block-Style Flushed	1	—	—	—	ISO-68 Hydraulic	1
111	45156	SS	Plug (1/2"NPT[M])	1	—	—	—	(Fill to specified crankcase capacity prior to start-up)	1
112	701794	NBR	O-Ring, Inlet Spacer - 70D	6	—	6119	—	Lubricant, Anti-Sieze (2 oz.)	1

CAUTIONS AND WARNINGS

All High Pressure Systems require a primary pressure regulating device (i.e. regulator, unloader) and a secondary pressure relief device (i.e. pop-off valve, relief valve). Failure to install such relief devices could result in personal injury or damage to pump or property. CAT PUMPS does not assume any liability or responsibility for the operation of a customer's high pressure system.

Read all CAUTIONS and WARNINGS before commencing service or operation of any high pressure system. The CAUTIONS and WARNINGS are included in each service manual and with each Accessory Data sheet. CAUTIONS and WARNINGS can also be viewed online at www.catpumps.com/cautions-warnings or can be requested directly from CAT PUMPS.

WARRANTY

View the Limited Warranty on-line at www.catpumps.com/warranty.

*Review individual parts in each kit for material code identification.

Italics are optional items. R Components comply with RoHS Directive.

See Tech Bulletins 003, 024, 036, 074, 083, and 095

MATERIAL CODES (Not Part of Part Number):

ABS=ABS Plastic AL=Aluminum BB=Brass

CC=Ceramic CM=ChromeMoly

D=Acetal F=Cast Iron FBR=Fiber FCM=Forged Chrome-Moly

NBR=Medium Nitrile (Buna-N) NBR5=Buna Silicone Free NY=Nylon

PE=Polyethylene PLM=Unspecified Poly PTFE=Pure Polytetrafluoroethylene

PVDF=Polyvinylidene Fluoride S=304SS SFTB=Special Blend PTFE Black

SS=316SS STG=Special Blend PTFE White SSZZ=316SSZamak

STCP=Steel/Chrome Plated STL=Steel STZP=Steel/Zinc Plated

TNM=Special High Strength ZP=Zinc Plated



CAT PUMPS

1681 - 94TH LANE N.E. MINNEAPOLIS, MN 55449-4324

PHONE (763) 780-5440 — FAX (763) 780-2958

e-mail: techsupport@catpumps.com

www.catpumps.com