

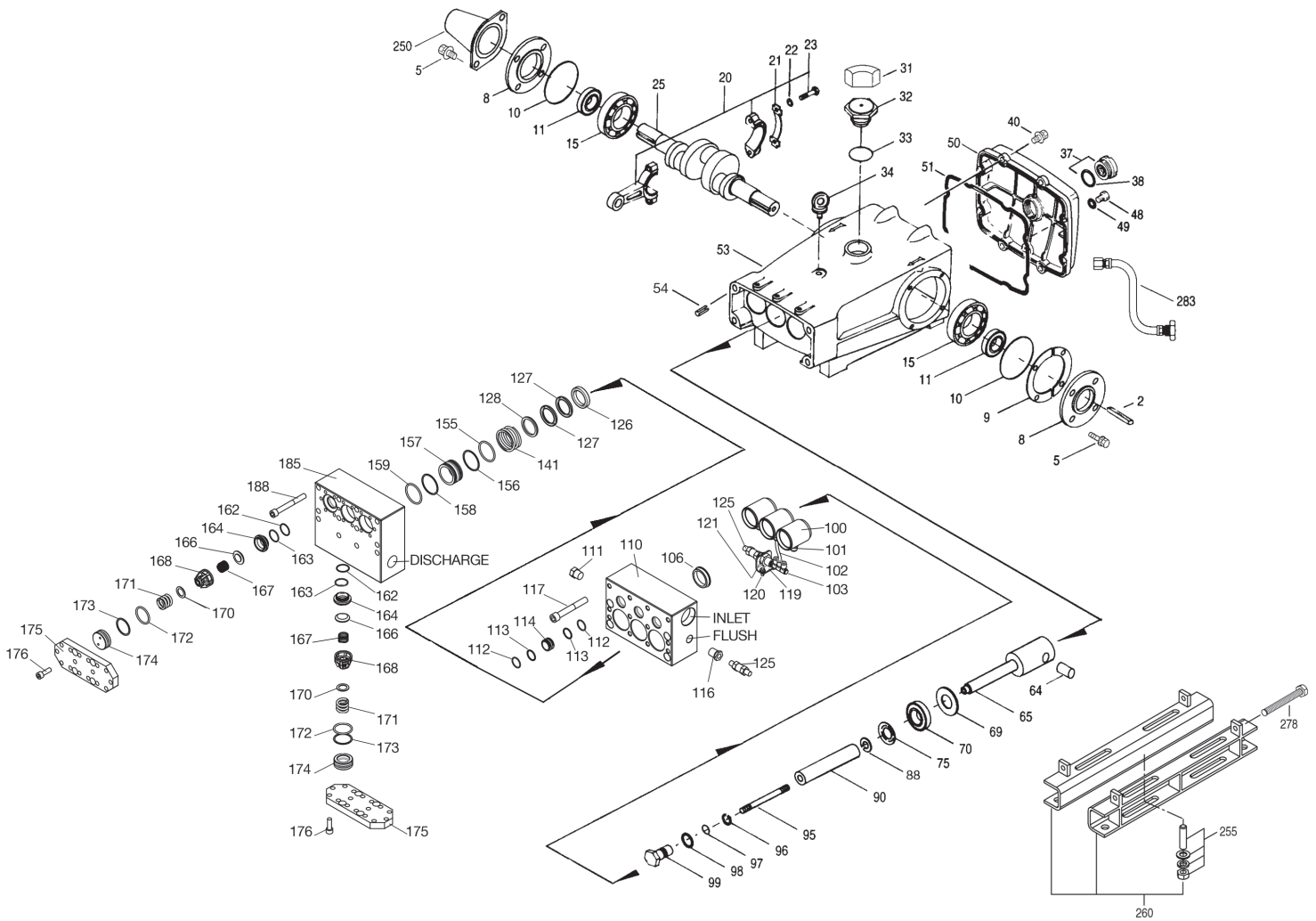
MODEL 3831KM.CO2



Specifications	U.S. Measure	Metric Measure
Flow	19.4 gpm	73.4 lpm
Pressure Range	400 to 1200 psi	28 to 85 bar
Max. RPM	450	450
*Inlet Pressure	300 to 700 psi	21 to 48 bar
Crankcase Capacity	4.2 Qts.	4 l
Dimensions	24.4 x 18.11 x 9.37"	620 x 460 x 238mm
Weight	167 lbs.	75 kg

* Temperature and pressure must be maintained to keep incoming CO2 in a liquid state.

EXPLODED VIEW



April 2014

(Parts List on Reverse Side)

PARTS LIST

ITEM	PN	MATL	DESCRIPTION	QTY	ITEM	PN	MATL	DESCRIPTION	QTY
2	34021	STL	Key (M10x8x70)	1	114	701317	SS	Spacer, Inlet	3
5	125753	S	(M8x25)	8	116	998032	SS	Bushing (1/2"NPT[M] x 1/4"NPT[F])	1
8	44542	AL	Covering, Bearing	2	117	701252	SS	Screw, HSH (M14x100)	4
9	815279	FBR	Shim, Split 2-Pc	0-2	119	34347	STZP	Bracket	1
10	12398	NBR	O-Ring, Bearing Cover - 70D	2	120	990776	STZP R	Screw, HHC (1/4" - 20 x 1/2")	2
11	13296	NBR	Seal, Oil, Crankshaft	2	121	34338	BB	Union (1/4"NPT[M])	1
15	29326	STL	Bearing, Roller	2	125	33937	SS	Valve, Check (1/4"NPT[M])	2
20	761467	TNM	Assembly, Connecting Rod (Incls: 21,22,23)	3	126	48391	D	Adapter, Female	3
21	126749	STCP R	Washer, Locking (M10)	3	127	44609	STG	V-Packing	6
22	126593	STCP R	Shim, Washer (M10.5x1.5)	6	128	45368	SS	Adapter, Male	3
23	122045	STZP	Screw, HH (M10x55)	6	141	49519	SS	Spring, Large Coil	3
25	29325	FCM	Crankshaft, Dual End (M48)	1	155	48860	NBR	O-Ring, V-Packing Spacer - 90D	3
31	828710	PE	Protector, Oil Cap w/Polyurethane Gasket	1	156	20464	PTFE	Back-up-Ring, V-Packing Spacer	3
32	43211	ABS	Cap, Oil Filler	1	157	49520	SS	Spacer, V-Packing	3
33	14177	NBR	O-Ring, Oil Filler Cap - 70D	1	158	20464	PTFE	Back-up-Ring, V-Packing Spacer	3
34	126743	STCP R	Bolt, Eye (M12x1.75) (For Lifting Pump Only)	1	159	48860	NBR	O-Ring, V-Packing Spacer - 90D	3
37	92241	—	Gauge, Oil, Bubble w/Gasket	1	162	44614	PTFE	Back-up-Ring, Seat	6
38	44428	NBR	Gasket, Flat, Oil Gauge	1	163	26142	NBR	O-Ring, Seat - 80D	6
40	125753	S	Screw, HH Sems (M8x25)	8	164	44612	SS	Seat	6
48	25625	STCP	Plug, Drain (1/4"x19BSP)	1	166	44108	SS	Valve	6
49	23170	NBR	O-Ring, Drain Plug - 70D	1	167	44109	SS	Spring	6
50	45936	AL	Cover, Rear	1	168	44728	PVDF	Retainer, Spring	6
51	16612	NBR	O-Ring, Rear Cover - 70D	1	170	44729	SS	Washer, Spring	6
53	44487	AL	Crankcase Assy (Incls: 34,54)	1	171	44644	SS	Spring, Coil	6
54	27488	S	Pin, Guide	2	172	89827	NBR	O-Ring, Valve Plug - 90D	6
64	763864	CM	Pin, Crosshead	3	173	48364	D	Back-up-Ring, Valve Plug	6
65	765116	SSZZ	Rod, Plunger	3	174	701278	SS	Plug, Valve	6
69	126587	STCP R	Washer, Oil Seal	3	175	701316	SS	Cover, Valve	2
70	100488	NBRS	Seal, Oil, Crankcase	3	176	87951	S	Screw, HSH (M10x30)	32
75	43865	S	Slinger, Barrier	3	185	701315	SS	Manifold, Discharge, Block-Style	1
88	45676	S	Washer, Keyhole	3	188	701279	S	Screw, HSH (M12x100)	12
90	43921	CC	Plunger (M40x145)	3	250	44516	NY	Protector, Shaft	1
95	89778	SS	Stud, Plunger Retainer (M10 x 135)	3	255	34039	S	Mount, Direct	1
96	20189	PTFE	Back-up-Ring, Plunger Retainer	3	260	92674	STZP R	Mount, Rail Assembly	1
97	11345	NBR	O-Ring, Plunger Retainer - 70D	3	275	990013	STL	Hub,"B" (35mm w/keyway)	1
98	44085	SS	Gasket, Plunger Retainer	3	278	80540	ZP	Screw,HH (M12x100) (Rail Adjusting Screw)	2
99	44084	SS	Retainer, Plunger (M10)	3	283	34314	—	Kit, Oil Drain (3/8"x48")	1
100	999324	AL	Retainer, Seal	3	290	6124	—	Gasket, Liquid (3 oz.)	1
101	999490	D	Adapter, 1/4"	3	299	—	SS	Head, Complete	1
102	999492	NY	Tubing, 1/4"	3	300	702243	NBR *	Kit, Seal (Incls: 97,106,112,113,127, 155,156,158,159)	1
103	999491	PLM	Manifold (3"x1/4"NPT[M])	1	310	34017	NBR	Kit, Valve Preambled (Incls:162-164,166-168,170-173)	2
106	701066	SFTB	Seal, LPS, w/S-Spg	3	—	6100	—	Oil, Case (12-21 oz. Bottles)ISO-68 Hydraulic (Fill to specified crankcase capacity prior to start-up)	1
110	701408	SS	Manifold, Inlet, Block-Style Flushed	1	—	6119	—	Lubricant, Anti-Sieze (2 oz.)	1
111	45156	SS	Plug (1/2"NPT[M])	1					
112	701794	NBR	O-Ring, Inlet Spacer - 70D	6					
113	701319	PTFE	Back-up-Ring, Inlet Spacer	6					

⚠ CAUTIONS AND WARNINGS

All High Pressure Systems require a primary pressure regulating device (i.e. regulator, unloader) and a secondary pressure relief device (i.e. pop-off valve, relief valve). Failure to install such relief devices could result in personal injury or damage to pump or property. CAT PUMPS does not assume any liability or responsibility for the operation of a customer's high pressure system.

Read all CAUTIONS and WARNINGS before commencing service or operation of any high pressure system. The CAUTIONS and WARNINGS are included in each service manual and with each Accessory Data sheet. CAUTIONS and WARNINGS can also be viewed online at www.catpumps.com/cautions-warnings or can be requested directly from CAT PUMPS.

WARRANTY

View the Limited Warranty on-line at www.catpumps.com/warranty.

**Review individual parts in each kit for material code identification.*

Italics are optional items. R Components comply with RoHS Directive.

See Tech Bulletins 003, 024, 036, 074, 077, 083, 084, 087, and 095

MATERIAL CODES (Not Part of Part Number):

ABS=ABS Plastic AL=Aluminum

BB=Brass CC=Ceramic CM=ChromeMoly

D=Acetal FBR=Fiber FCM=Forged Chrome-Moly

NBR=Medium Nitrile (Buna-N) NBRS=Buna,Silicone Free

NY=Nylon PLM=Unspecified Poly PTFE=Pure Polytetrafluoroethylene

PVDF=Polyvinylidene Fluoride PE=Polyethylene S=304SS SS=316SS

SFTB=Special Blend PTFE Black STG=Special Blend PTFE White

SSZZ=316SS/Zamak STCP=Steel/Chrome Plated STL=Steel

STZP=Steel/Zinc Plated TNM=Special High Strength ZP=Zinc Plated



CAT PUMPS

1681 - 94TH LANE N.E. MINNEAPOLIS, MN 55449-4324

PHONE (763) 780-5440 — FAX (763) 780-2958

e-mail: techsupport@catpumps.com

www.catpumps.com