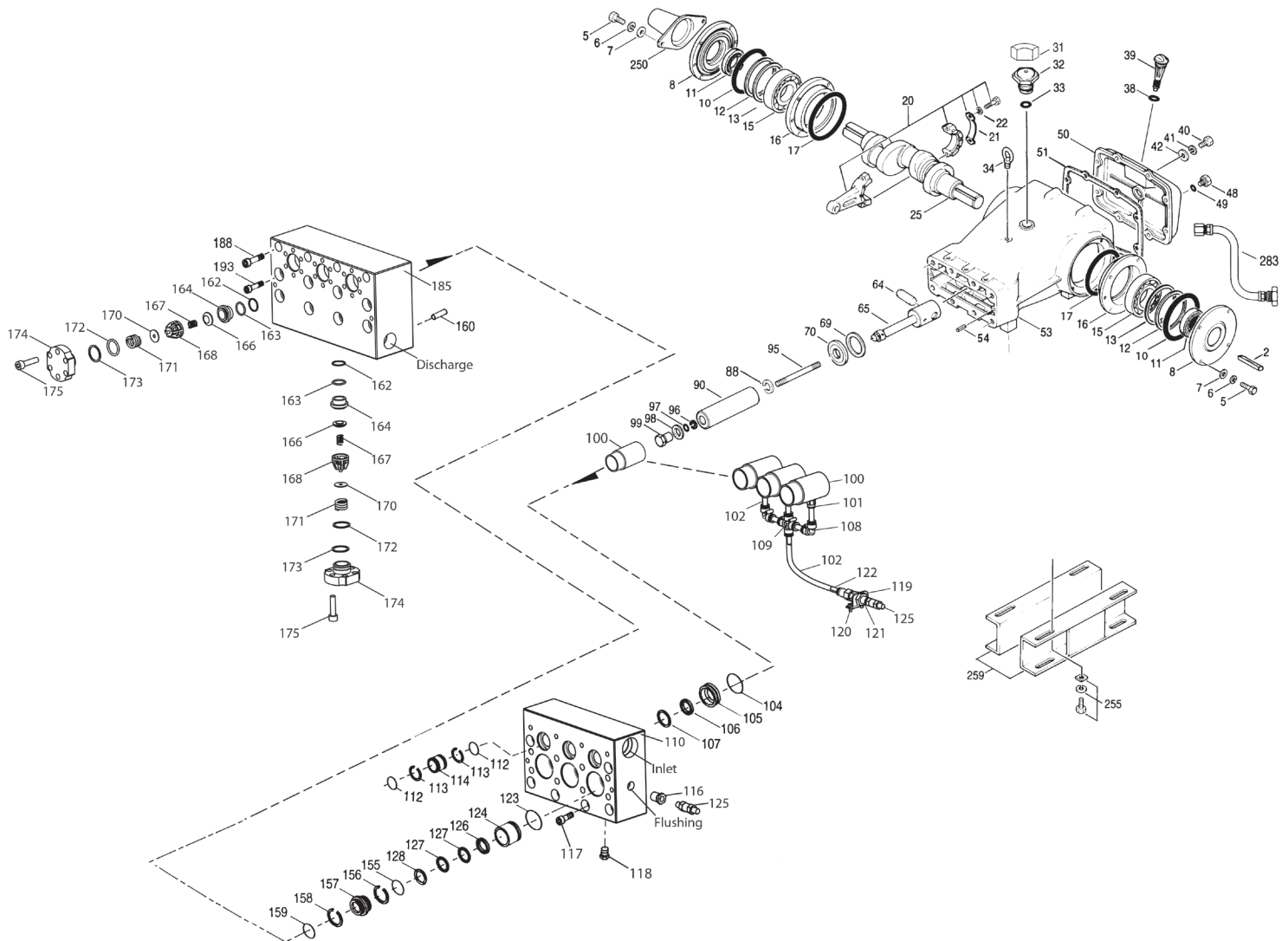


MODEL 6821KM.CO2



Specifications	U.S. Measure	Metric Measure
Flow	16.0 gpm	60.6 lpm
Pressure Range	100 to 3000 psi	7 to 210 bar
Max. RPM	450	450
Crankcase Capacity	10 Qts.	9.46 l
Dimensions	29.66 x 24.02 x 12.00"	753 x 610 x 305mm
Weight	355 lbs.	161 kg

EXPLODED VIEW



February 2014

(Parts List on Reverse Side)

PARTS LIST

ITEM	PN	MATL	DESCRIPTION	QTY	ITEM	PN	MATL	DESCRIPTION	QTY
2	43048	STL	Key (M14x9x90)	1	111	701116	SS	Plug, Inlet Manifold (1-1/2" NPTM)	1
5	89728	S	Screw, HH (M10x40)	8	112	701632	NBR	O-Ring, Spacer	6
6	15847	S	Lockwasher (M10)	8	113	701329	PTFE	Back-up-Ring, Spacer	6
7	19934	S	Washer, Flat (M10)	8	114	701327	SS	Spacer, Inlet	3
8	29443	AL	Cover, Bearing, Outer	2	116	998032	SS	Bushing (1/2"NPTM x 1/4" MNPT)	1
10	29444	NBR	O-Ring, Bearing Cover -70D	2	117	89694	S	Screw, HSH (M16x110)	6
11	11443	NBR	Seal, Oil, Crankshaft - 70D	2	118	701077	SS	Plug (1/4" NPTM)	3
12	126594	STCP R	Washer, Shim (M120x0.3)	0-2	119	34347	STZP	Bracket	1
13	126595	STCP R	Washer, Shim (M120x0.5)	0-2	120	990776	STZP R	Screw, HHC (1/4" - 20 x 1/2")	2
15	29441	STL	Bearing, Roller	2	121	34338	BB	Union, (1/4"NPTM)	1
16	29442	STL	Cover, Bearing, Inner	2	122	703147	BBNP	Adapter, Tubing (1/2"NPTF x 12MM)	1
17	29444	NBR	O-Ring, Bearing Cover - 70D	2	123	12391	NBR	O-Ring, V-Packing Cylinder - 70D	3
20	766612	BBHS	Assembly, Connecting Rod (Incls: 21, 22)	3	124	701330	SS	Cylinder, V-Packing	3
21	126560	STCP R	Washer, Locking	3	125	33937	SS	Valve, Check (1/4"NPTM)	2
22	126593	STCP R	Washer, Shim (M10.5x1.5)	6	126	45564	SS	Adapter, Female	3
25	29440	FCM	Crankshaft, Dual Shaft	1	127	76608	ST4	V-Packing	6
31	828710	—	Protector, Oil Cap w/Foam Gasket	1	128	704477	SS	Adapter, Male	3
32	43211	ABS	Cap, Oil Filler	1	155	48861	NBR	O-Ring, V-Packing Spacer, Inner - 90D	3
33	14177	NBR	O-Ring, Filler Cap - 70D	1	156	48371	D	Back-up-Ring, Spacer, Inner	3
34	126743	STCP R	Bolt, Eye (M12) (For Lifting Pump Only)	1	157	45674	SS	Spacer, V-Packing	3
38	129343	RBR	Gasket, Flat Flex	1	158	48362	D	Back-up-Ring, Spacer, Outer	3
39	49948	ABS	Stick, Dip	1	159	48860	NBR	O-Ring, V-Packing Spacer, Outer - 90D	3
40	89627	S	Screw, HH (M10x30)	8	160	44756	S	Pin, Guide	2
41	15847	S	Lockwasher (M10)	8	162	21985	PTFE	Back-up-Ring, Seat	6
42	19934	S	Washer, Flat (M10)	8	163	26089	NBR	O-Ring, Seat - 80D	6
48	25625	STCP	Plug, Drain (1/4"x19BSP)	1	164	44080	SS	Seat	6
49	23170	NBR	O-Ring, Drain Plug - 70D	1	166	44081	SS	Valve	6
50	29438	AL	Cover, Rear	1	167	44082	SS	Spring	6
51	129386	NBR	Gasket, Rear Cover	1	168	44735	PVDF	Retainer, Spring	6
53	45303	AL	Crankcase (Incls: 34, 54)	1	170	44794	SS	Washer, Retainer	6
54	43282	S	Pin, Guide	2	171	44793	SS	Spring, Coil	6
64	769481	CM	Pin, Crosshead	3	172	15853	NBR	O-Ring, Valve Plug - 70D	6
65	768735	SSZZ	Rod, Plunger	3	173	20224	PTFE	Back-up-Ring, Valve Plug	6
69	126588	STCP R	Washer, Oil Seal	3	174	701260	SS	Plug, Valve	6
70	29454	NBR	Seal, Oil Crankcase - 80D	3	175	87951	S	Screw, HSH (M10x30)	36
88	45676	S	Washer, Keyhole (M16)	3	185	701320	SS	Manifold, Discharge, Block-Style	1
90	43957	CC	Plunger (M32x145)	3	188	701279	S	Screw, HSH (M12x100), Lower	4
95	89778	SS	Stud, Plunger Retainer (M10x135)	3	193	89694	S	Screw, HSH (M16x110), Upper	8
96	20189	PTFE	Back-up-Ring, Plunger Retainer	3	250	29445	AL	Protector, Shaft	1
97	11345	NBR	O-Ring, Plunger Retainer - 70D	3	255	33243	STZP	Kit, Mount (Included w/Pump)	2
98	44085	SS	Gasket, Plunger Retainer	3	259	126604	STCP R	Rail, Box (Included w/Pump)	2
99	44084	SS	Retainer, Plunger (M10)	3	275	990014	STL	Hub, "B", M45 w/Keyway [See Tech Bulletin 003]	1
100	703222	D	Retainer, Seal	3	283	34314	—	Kit, Oil Drain (3/8" x 48")	1
101	703146	BBNP	Adapter, Tubing (3/8"NPTM x 12MM)	3	290	6124	—	Gasket, Liquid (3 oz.)	1
102	703142	NY	Tubing (12MM)	6	299	—	SS	Head, Complete, Block-Style, Flushed	1
103	998550	NY	Nipple (1/2"MNPT x 1/4"MNPT)	1	300	76330	NBR*	Kit, Seal (Incls: 97,104,106,112,113,123,127,155,156,158,159)	1
104	43875	NBR	O-Ring, Adapter, Inlet - 70D	3	310	34151	NBR	Kit, Valve (Incls: 162,163,164,166,167,168,170,172,173)	2
105	45562	SS	Adapter, Inlet, LPS	3	—	6105	—	Oil, Twin Pack (Two-2.5 Gal) ISO-68 Hydraulic (Fill to specified crankcase capacity prior to start-up)	1
106	76298	ST2	Seal, LPS, w/SS-Spg	3	—	6119	—	Lubricant, Antiseize (2 oz.)	1
107	44101	SS	Washer, LPS	3					
108	703145	D	Elbow (12MM)	2					
109	703144	D	Cross, Barb (12MM)	1					
110	701322	SS	Manifold Inlet, Block-Style, Flushed	1					

⚠ CAUTIONS AND WARNINGS

All High Pressure Systems require a primary pressure regulating device (i.e. regulator, unloader) and a secondary pressure relief device (i.e. pop-off valve, relief valve). Failure to install such relief devices could result in personal injury or damage to pump or property. CAT PUMPS does not assume any liability or responsibility for the operation of a customer's high pressure system.

Read all CAUTIONS and WARNINGS before commencing service or operation of any high pressure system. The CAUTIONS and WARNINGS are included in each service manual and with each Accessory Data sheet. CAUTIONS and WARNINGS can also be viewed online at www.catpumps.com/cautions-warnings or can be requested directly from CAT PUMPS.

WARRANTY

View the Limited Warranty on-line at www.catpumps.com/warranty.

*Review individual parts in each kit for material code identification. *Italics are optional items.* R Components comply with RoHS Directive. See Tech Bulletins 003, 024, 036, 074, 077, 083, 084, 087, 095 and 105 MATERIAL CODES (Not Part of Part Number):

ABS=ABS Plastic AL=Aluminum
 BBHS=Brass/High Strength BBNP=Brass/Nickel Plated BB=Brass
 CC=Ceramic CM=ChromeMoly
 D=Acetal F=Cast Iron FCM=Forged Chrome-Moly
 NBR=Medium Nitrile (Buna-N) NY=Nylon
 PTFE=Pure Polytetrafluoroethylene PVDF=Polyvinylidene Fluoride
 RBR=Rubber S=304SS SS=316SS ST2=Special PTFE2
 ST4=Special PTFE4 SSZZ=316SSZamak
 STCP=Steel/Chrome Plated STL=Steel STZP=Steel/Zinc Plated



CAT PUMPS

1681 - 94TH LANE N.E. MINNEAPOLIS, MN 55449-4324
 PHONE (763) 780-5440 — FAX (763) 780-2958
 e-mail: techsupport@catpumps.com
www.catpumps.com