

PRESSURE REGULATOR STAINLESS STEEL Part No. 07390/...91/...92/...93



Features

- —
 Maintains full system pressure while running in idle
 — —
- Offers pump protection against pressure fluctuations and system changes
 — —
- Minimum pressure fluctuations with alternating use of multiple guns and nozzles
 — —
- Top adjusting bolt and locking nut to secure exact pressure setting
 — —
- No external moving parts. Stainless Steel, PEEK and NBR internal parts for temperature, wear and liquid compatibility

CAUTION

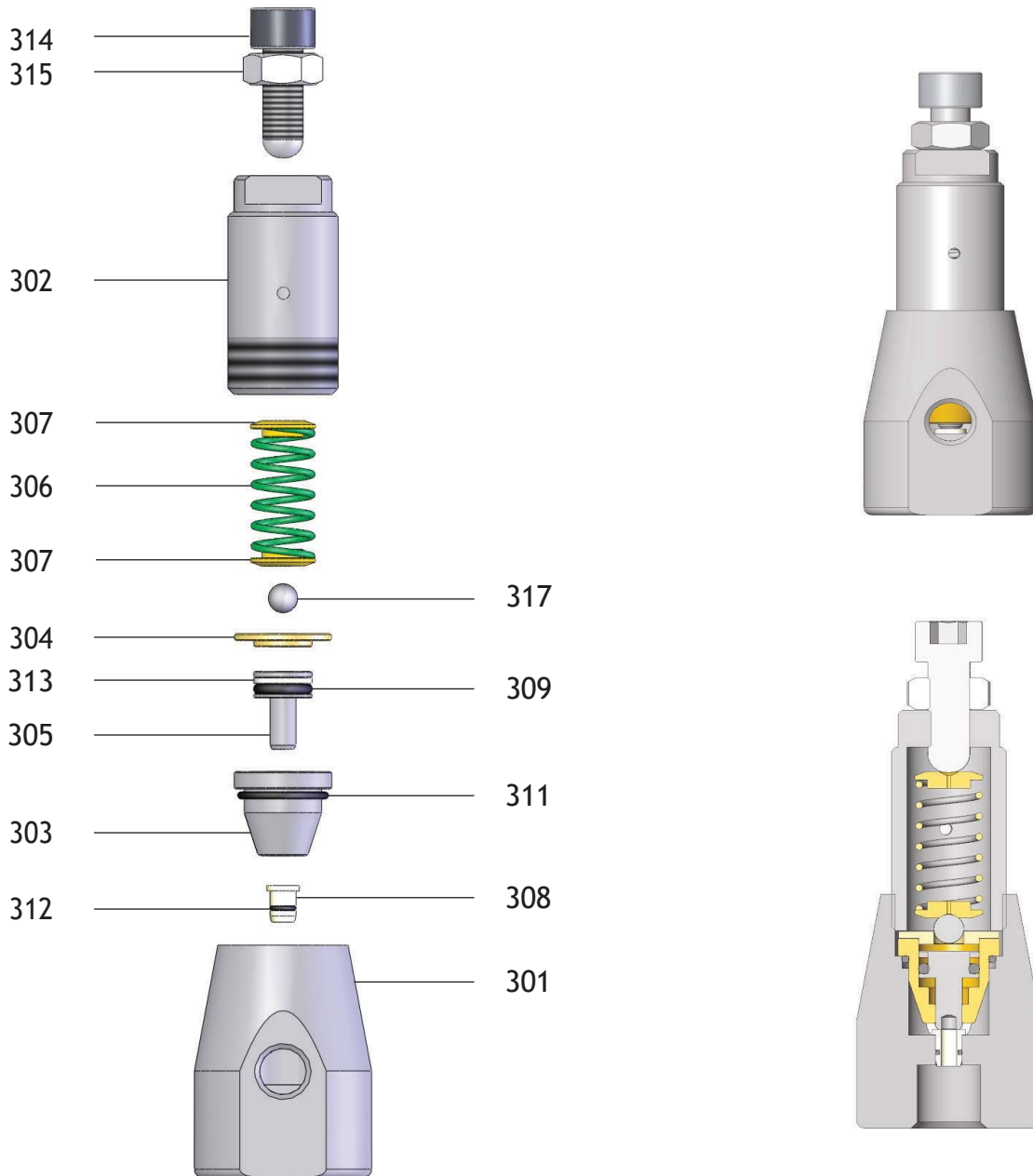
All systems require both primary pressure regulating device (i.e., regulator, unloader) and a secondary pressure safety relief device (i.e., pop-off valve, safety valve). Failure to install such relief devices could result in personal injury or damage to the pump or to system components. Kothar does not assume any liability or responsibility for the operation of a customers high pressure system.

MODELS

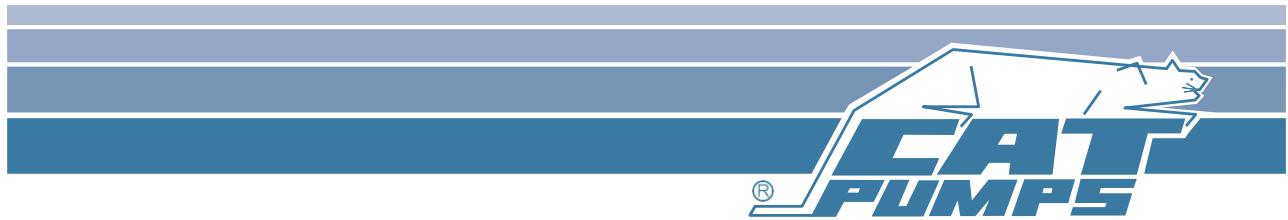
Flow Range	0-35 L/M
Pressure Range (07390)	10- 70 BAR
Pressure Range (07391)	30-105 BAR
Pressure Range (07392)	50-155 BAR
Pressure Range (07393)	70-210 BAR
Max. Temperature	80 C
Inlet Port	1/4"BSP
BY-Pass Port	3/8"BSP



PRESSURE REGULATOR STAINLESS STEEL Part No. 07390/...91/...92/...93



"Customer confidence is our greatest asset"



PRESSURE REGULATOR STAINLESS STEEL Part No. 07390/...91/...92/...93

Item	Description	Material	Part nr.	07390	07391	07392	07393
301	Valve Body	SS316	110 070 035	x	x	x	x
302	Spring Housing	SS304	110 070 036	x	x	x	x
303	Cylinder	SS316	110 070 040	x	x		
			110 070 042			x	x
304	Cylinder Cap	Brass	110 070 041	x	x		
			110 070 043			x	x
305	Piston	SS316	110 070 037	x	x		
			110 070 057			x	x
306	Spring	High Tension Steel	110 070 055		x		x
			110 070 038	x		x	
307	Spring Retainer	Brass	110 070 044	x	x	x	x
308	Seat	PEEK	110 070 039	x	x	x	x
309	O-ring 9.2x2.62	NBR 90	510 500 105	x	x		
	6.02x2.62		510 500 108			x	x
311	O-ring 18.77x1.78	NBR 90	510 550 106	x	x	x	x
312	O-ring 4.5x1	NBR 90	510 500 606	x	x	x	x
313	Teflon ring 9.8x14.3x1.3	PTFE	110 070 048	x	x		
	6.6x11.2x1.3		110 070 054			x	x
314	Bolt	SS304	110 070 049	x	x	x	x
315	Nut	SS304	110 070 050	x	x	x	x
317	Ball	SS304	110 070 052	x	x	x	x
	O-ring set		110 070 056	x	x		
			110 070 059			x	x
	Repair set		110 070 234	x			
			110 070 244		x		
			110 070 254			x	
			110 070 264				x