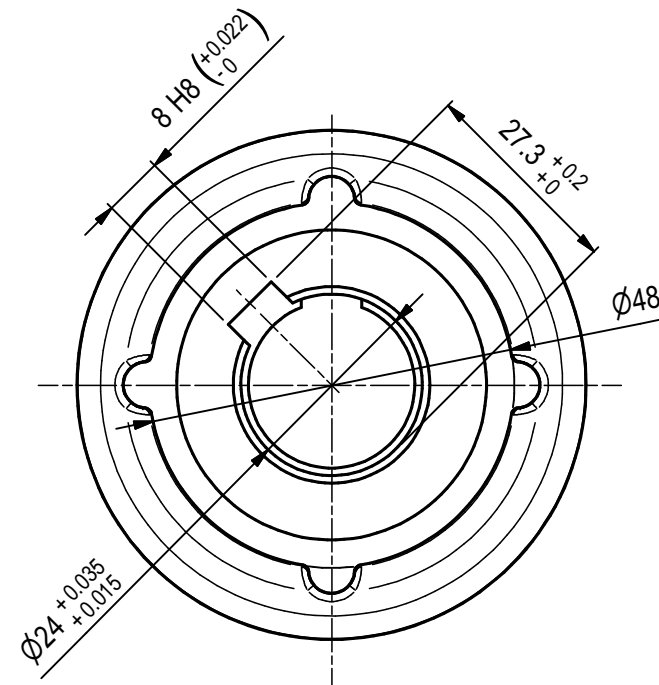
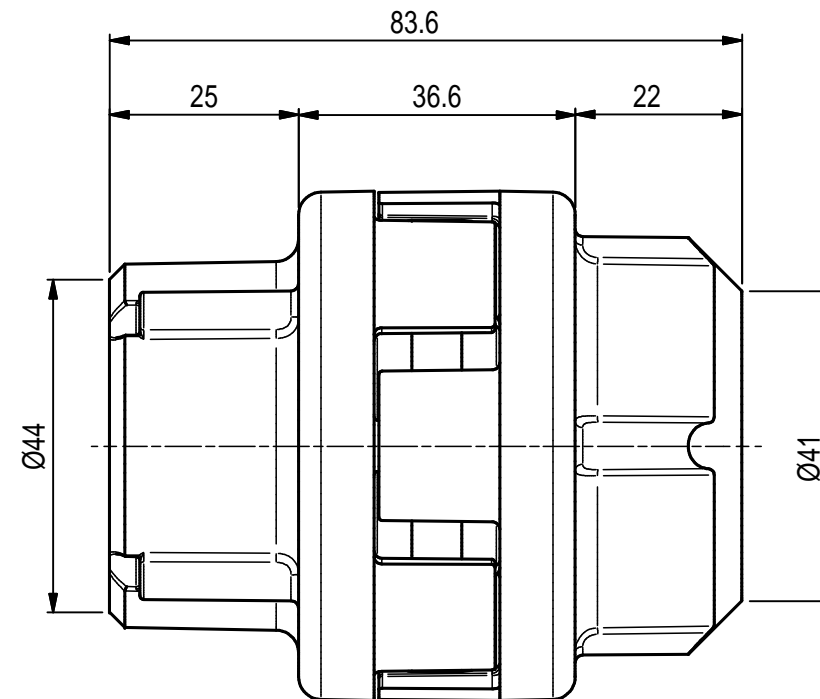
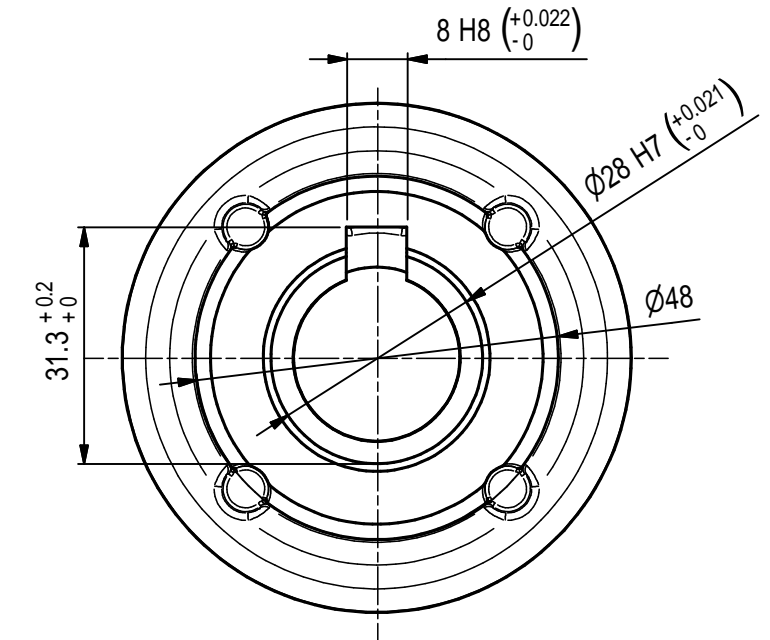


# GIUNTO/FLEXIBLE COUPLING 1.099-541.0

LATO POMPA  
PUMP SIDE



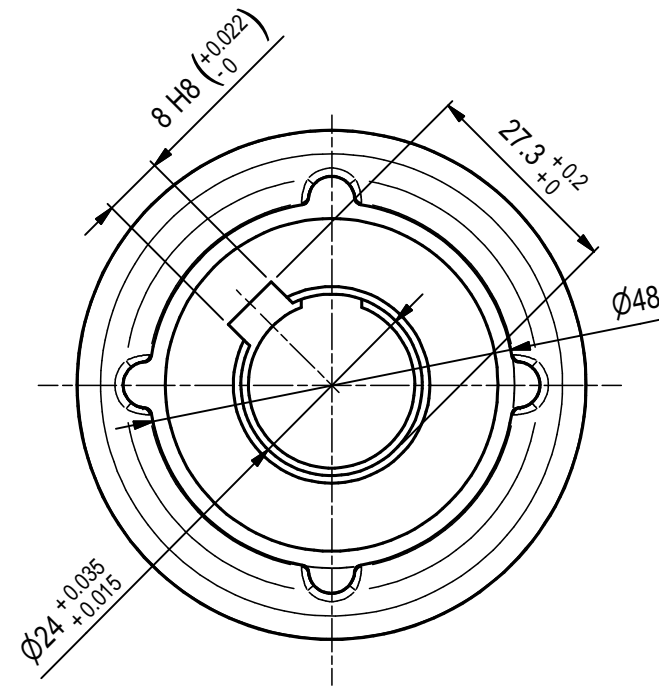
LATO MOTORE  
MOTOR SIDE



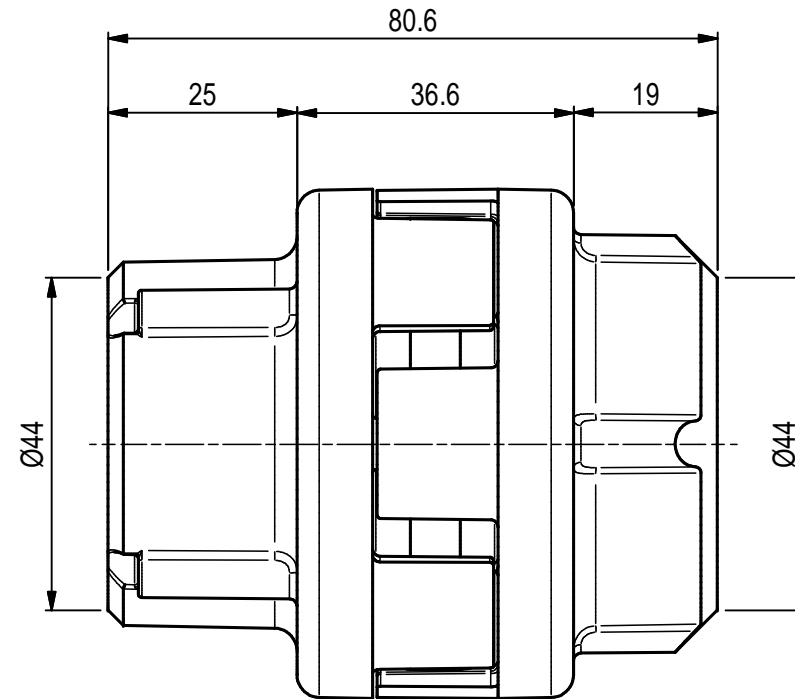
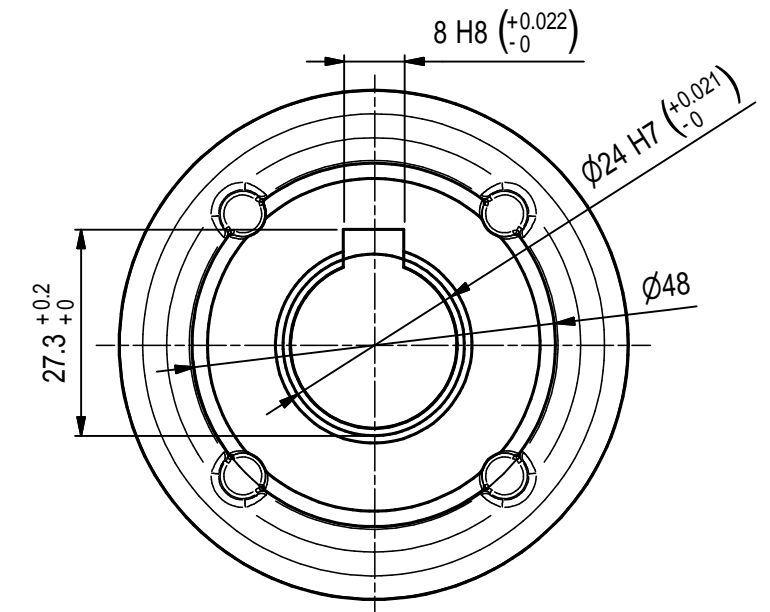
Materiale <i>material</i>	Stato <i>metalworking</i>		Scala <i>scale</i> 1:1	Disegnatore <i>drawn by</i> MR	
Tratt. Superficiale <i>surface treatment</i>	Profondità <i>depth</i> mm		 dimensioni in mm	Visto <i>checked by</i>	
Tratt. Termico <i>heat treatment</i>	Durezza <i>hardness</i> HRc				
Tolleranze generali / <i>general tolerances</i>	Vecchia Codifica <i>Old Part Number</i>	Sostituisce <i>replaces</i>	del <i>date</i>	Foglio <i>sheet</i> 1 di 1	Data <i>date</i> 28/03/17
Tolleranze / <i>tolerances</i> <b>DIN ISO 8015</b> Superficie / <i>surface</i> <b>DIN ISO 1302</b>	Denominazione <i>description</i> GIUNTO ELASTICO Ø24-28 H100/112 (NMT)		CODICE / <i>drawing number</i> 1.099-541.0		Rev. 00

# GIUNTO/FLEXIBLE COUPLING 1.099-542.0

LATO POMPA  
PUMP SIDE



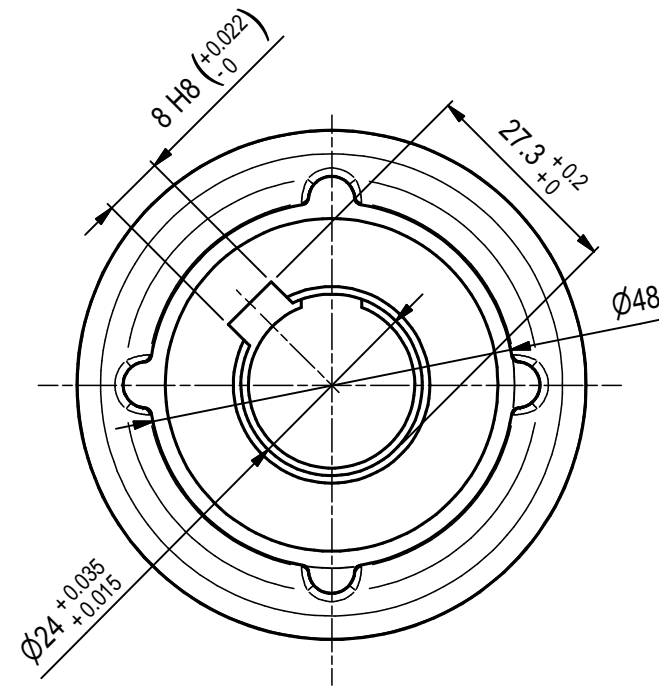
LATO MOTORE  
MOTOR SIDE



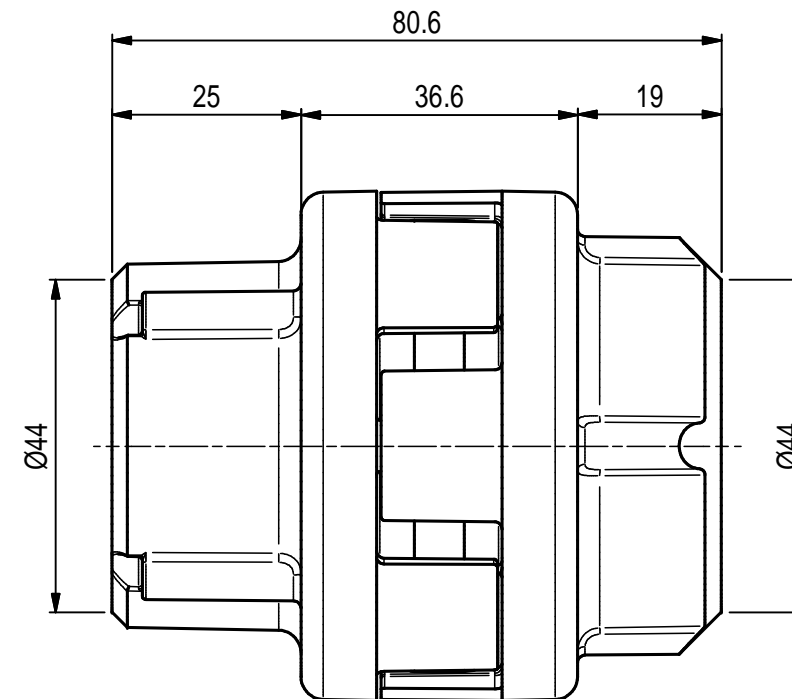
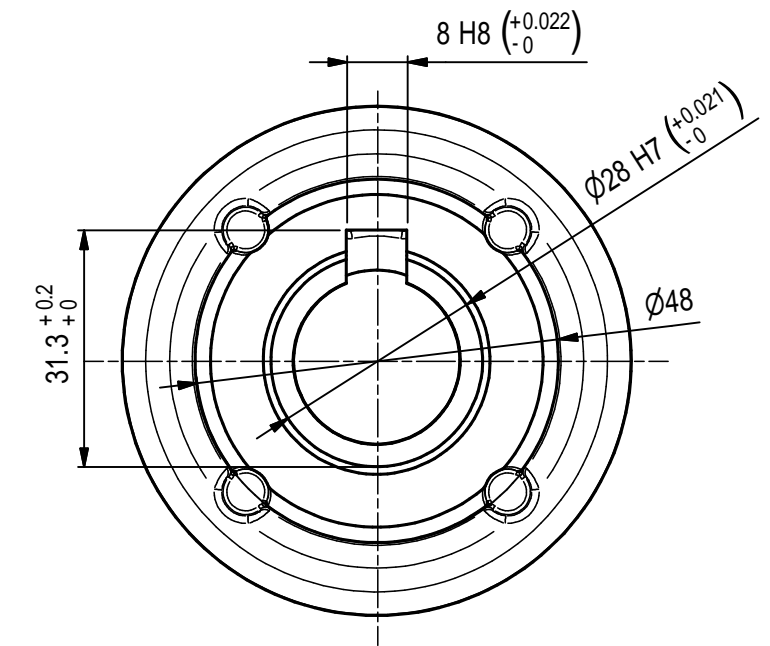
Materiale <i>material</i>	Stato <i>metalworking</i>		Scala <i>scale</i> 1:1	Disegnatore <i>drawn by</i> MR	
Tratt. Superficiale <i>surface treatment</i>	Profondità <i>depth</i> mm		 dimensioni in mm	Visto <i>checked by</i>	
Tratt. Termico <i>heat treatment</i>	Durezza <i>hardness</i> HRc				
Tolleranze generali / <i>general tolerances</i>	Vecchia Codifica <i>Old Part Number</i>	Sostituisce <i>replaces</i>	del <i>date</i>	Foglio <i>sheet</i> 1 di 1	Data <i>date</i> 28/03/17
Tolleranze / <i>tolerances</i> <b>DIN ISO 8015</b> Superficie / <i>surface</i> <b>DIN ISO 1302</b>	Denominazione <i>description</i> GIUNTO ELASTICO Ø24-24 H90 (NHD)		CODICE / <i>drawing number</i> 1.099-542.0		Rev. 00

# GIUNTO/FLEXIBLE COUPLING 1.099-543.0

LATO POMPA  
PUMP SIDE



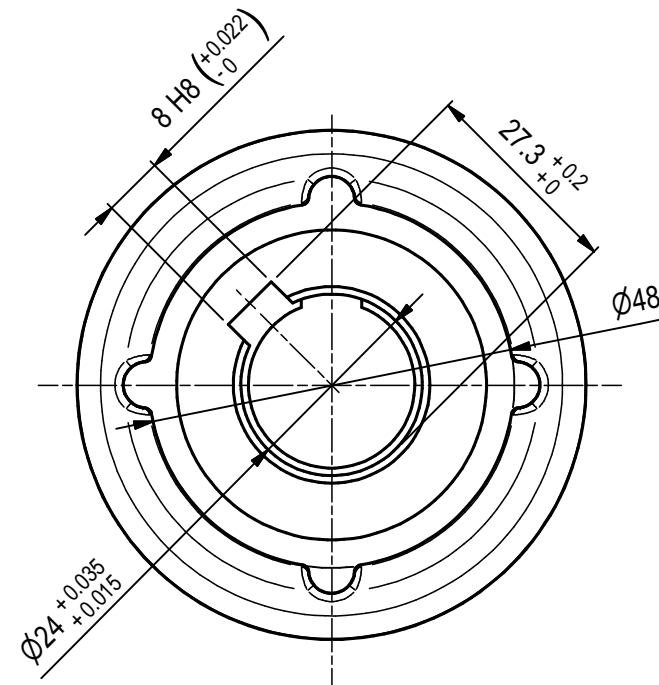
LATO MOTORE  
MOTOR SIDE



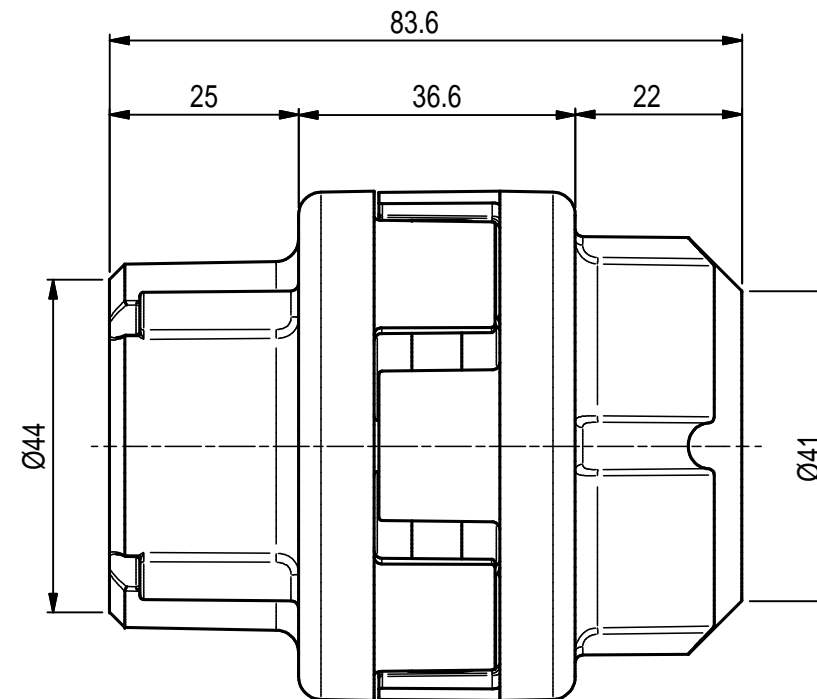
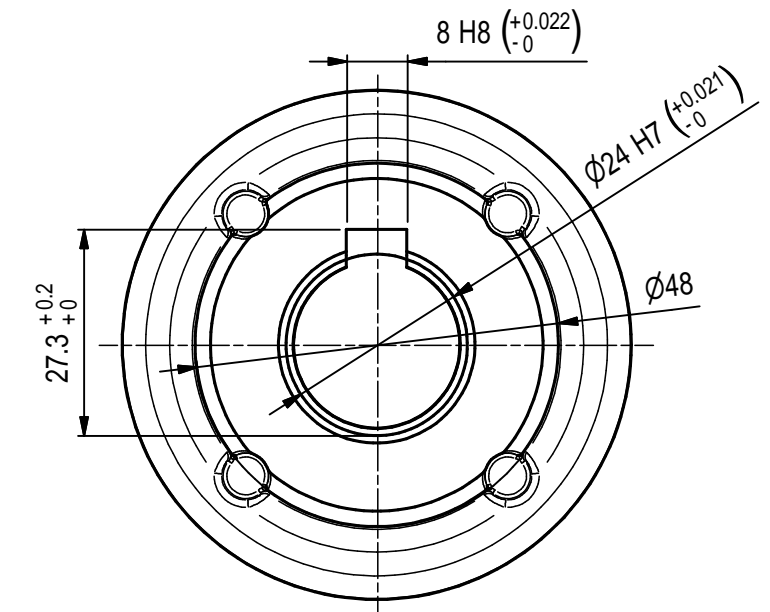
Materiale material	Stato metalworking		Scala scale 1:1	Disegnatore drawn by MR	
Tratt. Superficiale surface treatment	Profondità depth mm		 dimensions in mm	Visto checked by	
Tratt. Termico heat treatment	Durezza hardness HRc				
Tolleranze generali / general tolerances	Vecchia Codifica Old Part Number	Sostituisce replaces	del date	Foglio sheet 1 di of 1	Data date 28/03/17
Tolleranze / tolerances <b>DIN ISO 8015</b> Superficie / surface <b>DIN ISO 1302</b>	Denominazione description		CODICE / drawing number		Rev.
	GIUNTO ELASTICO Ø24-28 H100/112 (NHD)		1.099-543.0		00



# GIUNTO/FLEXIBLE COUPLING 1.099-544.0

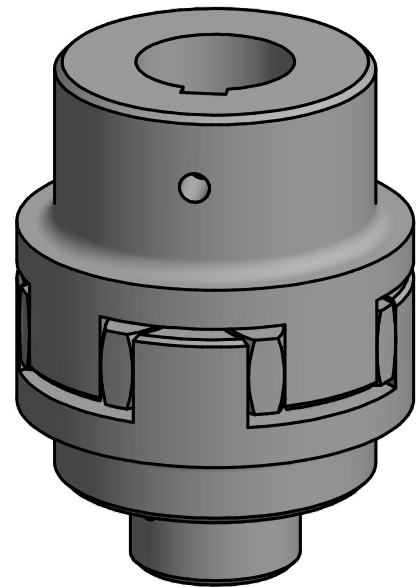
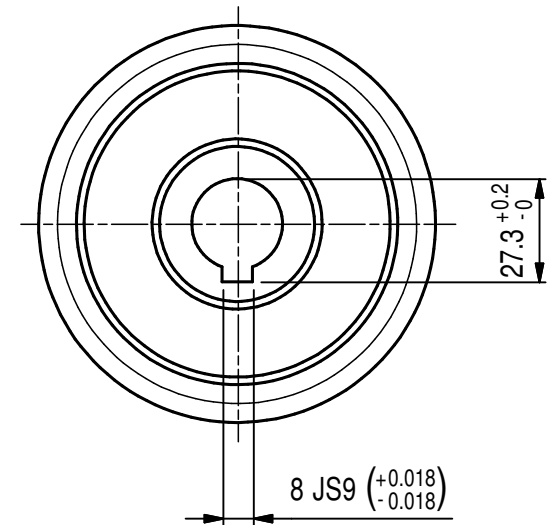
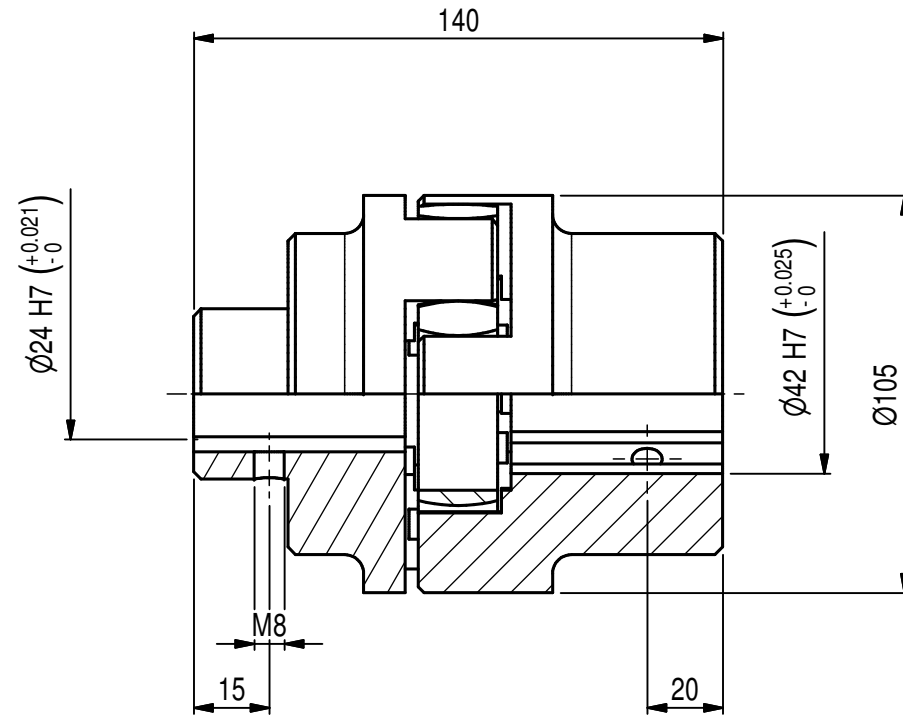
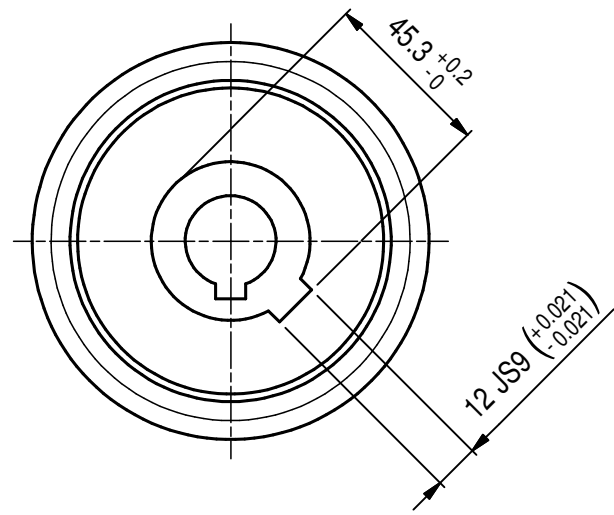
LATO POMPA  
PUMP SIDE



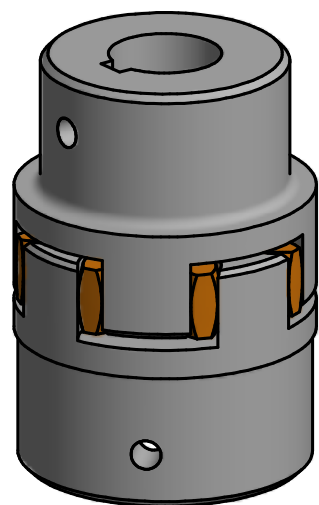
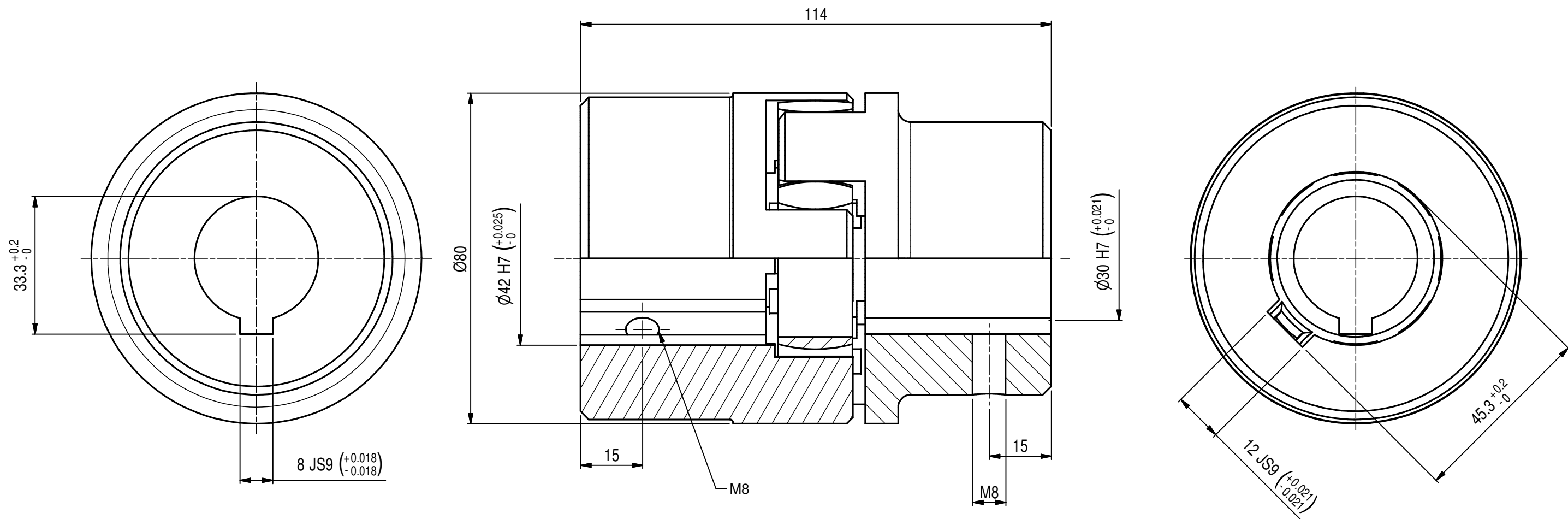
LATO MOTORE  
MOTOR SIDE



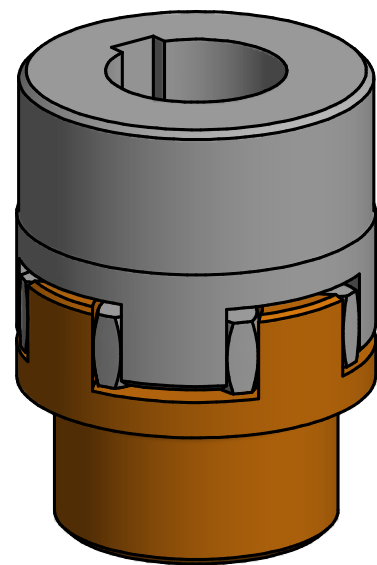
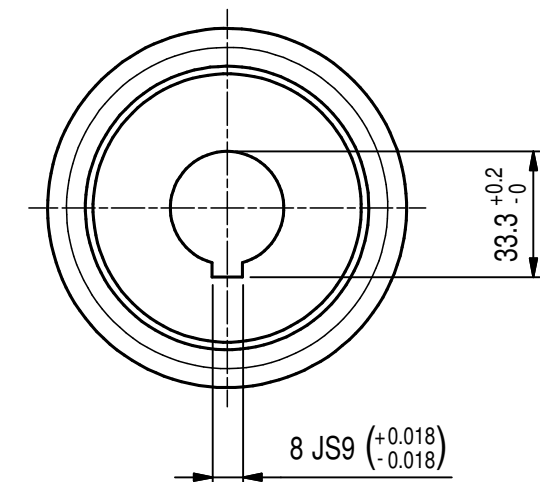
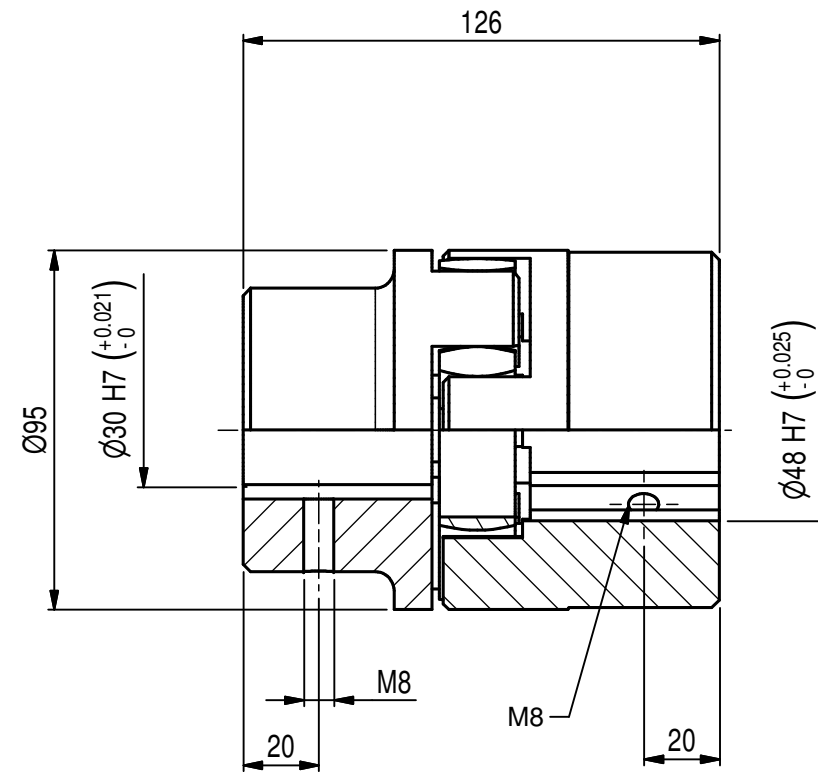
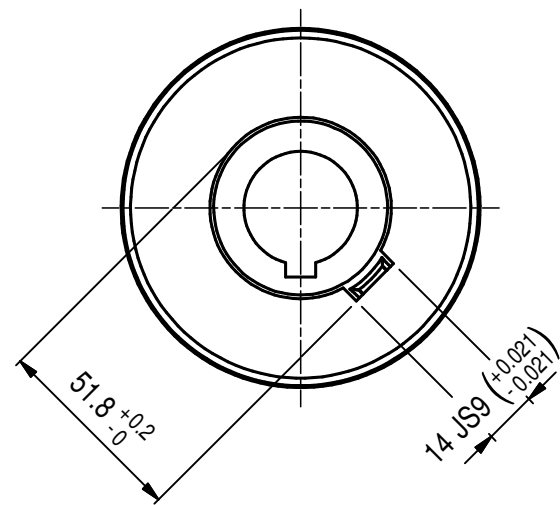
Materiale <i>material</i>	Stato <i>metalworking</i>		Scala <i>scale</i> 1:1	Disegnatore <i>drawn by</i> MR	
Tratt. Superficiale <i>surface treatment</i>	Profondità <i>depth</i> mm		 Visto <i>checked by</i>		
Tratt. Termico <i>heat treatment</i>	Durezza <i>hardness</i> HRc				
Tolleranze generali / <i>general tolerances</i>	Vecchia Codifica <i>Old Part Number</i>	Sostituisce <i>replaces</i>	del <i>date</i>	Foglio <i>sheet</i> 1 di 1	Data <i>date</i> 28/03/17
Tolleranze / <i>tolerances</i> <b>DIN ISO 8015</b> Superficie / <i>surface</i> <b>DIN ISO 1302</b>	Denominazione <i>description</i> GIUNTO ELASTICO Ø24-24 H90 (NMT)		CODICE / <i>drawing number</i> 1.099-544.0		Rev. 00



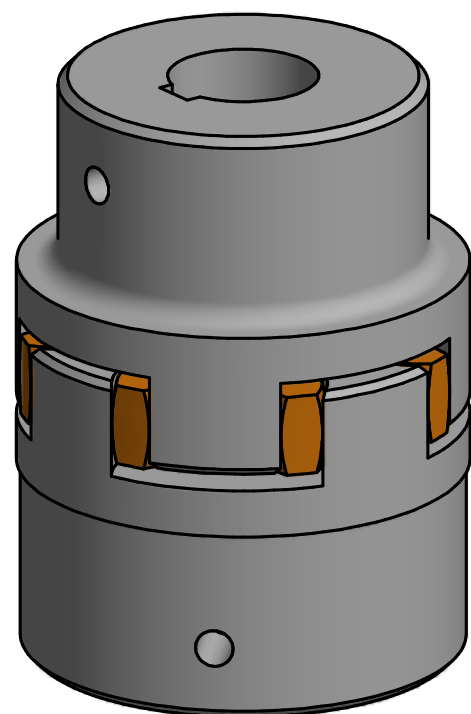
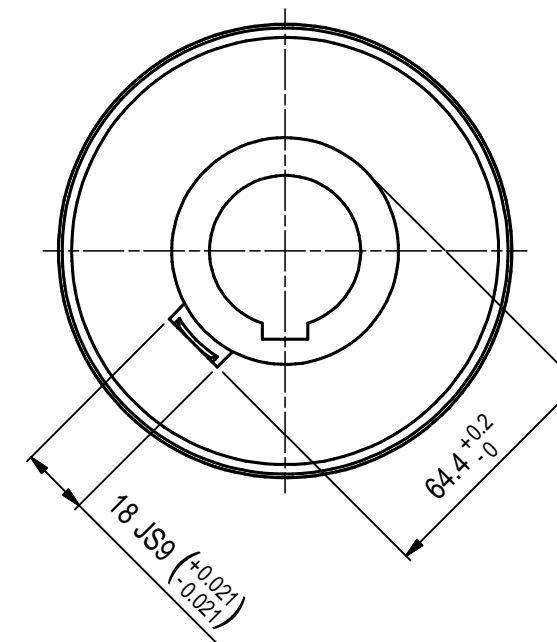
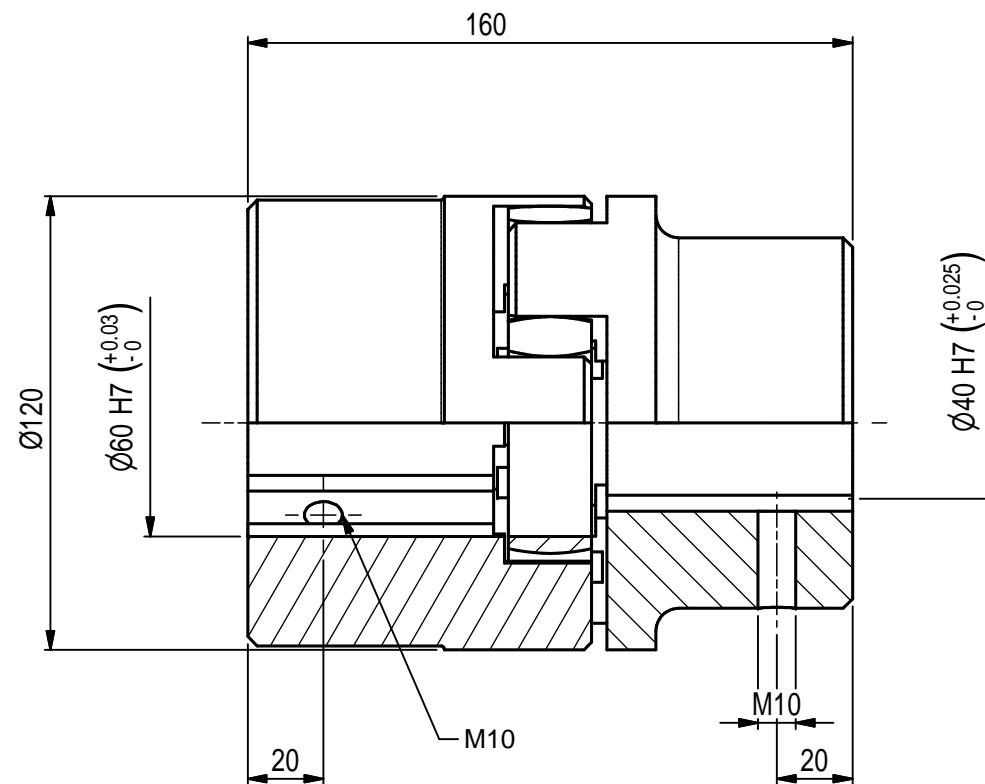
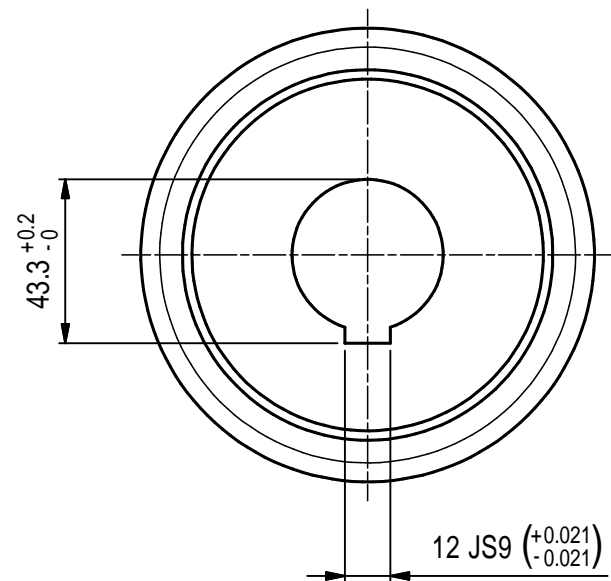
Materiale material	Stato metalworking		Scala scale	Disegnatore drawn by								
Tratt. Superficiale surface treatment	Profondità depth		1:2	MR								
Tratt. Termico heat treatment	Durezza hardness		 dimensions in mm	Visto checked by								
Tolleranze generali / general tolerances		Vecchia Codifica Old Part Number	2415.26	Sostituisce replaces	1.099-547.0	del date	01/10/12	Foglio sheet	1 di of	1	Data date	09/01/2019
Tolleranze / tolerances <b>DIN ISO 8015</b> Superficie / surface <b>DIN ISO 1302</b>		Denominazione description		CODICE / drawing number		Rev.		1.905-877.0		01		
		GIUNTO ELASTICO Ø24-42 H160										



Materiale material	Stato metalworking		Scala scale 1:2	Disegnatore drawn by GP							
Tratt. Superficiale surface treatment	Profondità depth mm			Visto checked by							
Tratt. Termico heat treatment	Durezza hardness HRc			dimensioni in mm							
Tolleranze generali / general tolerances	Vecchia Codifica Old Part Number	2415.31	Sostituisce replaces	1.099-548.0	del date	15/06/16	Foglio sheet	1 di of	1	Data date	09/01/2019
Tolleranze / tolerances <b>DIN ISO 8015</b> Superficie / surface <b>DIN ISO 1302</b>	Denominazione description	ROTEX 38 GG 92° 1.0 Ø30 - 1A Ø42		CODICE / drawing number		1.905-878.0		Rev.	01		

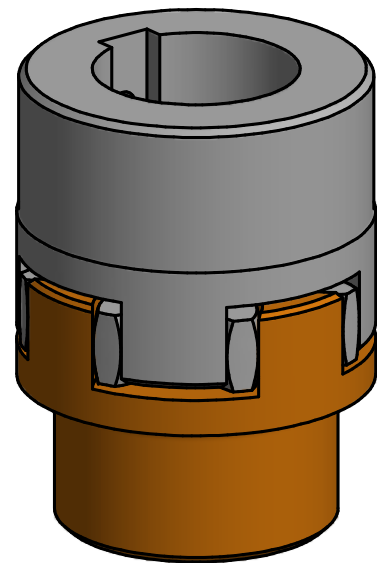
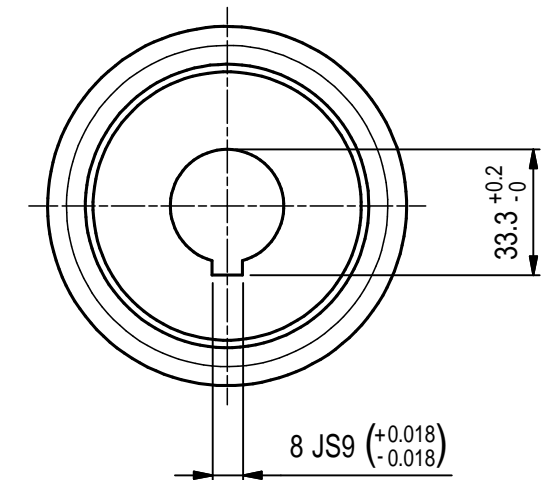
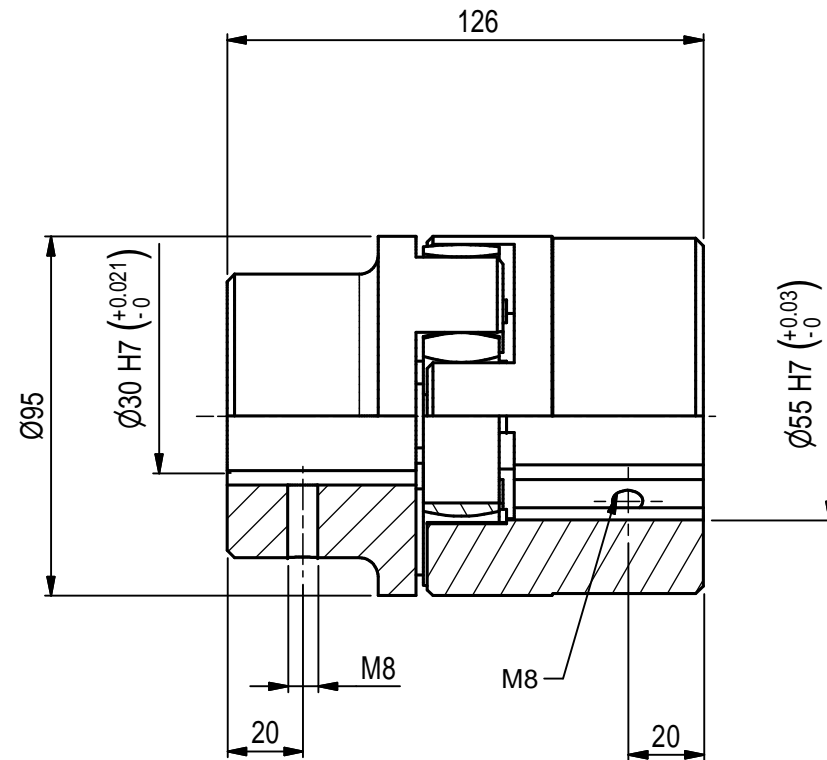
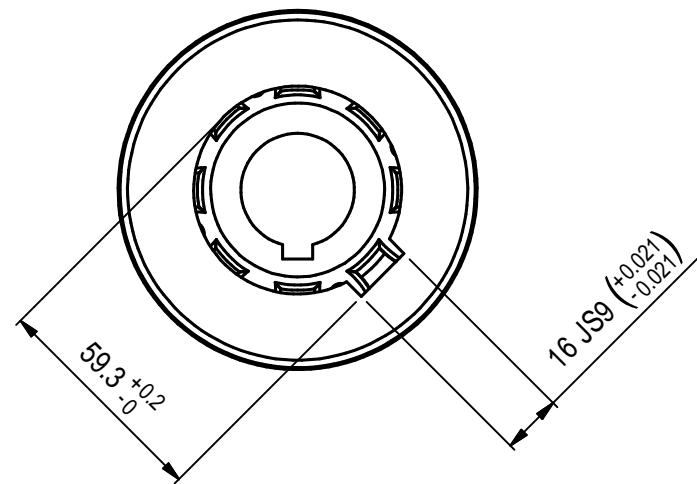


Materiale material	Stato metalworking		Scala scale 1:2	Disegnatore drawn by GP							
Tratt. Superficiale surface treatment	Profondità depth mm			Visto checked by							
Tratt. Termico heat treatment	Durezza hardness HRc			dimensions in mm							
Tolleranze generali / general tolerances	Vecchia Codifica Old Part Number	2415.32	Sostituisce replaces	1.099-549.0	del date	15/06/16	Foglio sheet	1 di of	1	Data date	09/01/19
Tolleranze / tolerances Superficie / surface	<b>DIN ISO 8015</b> <b>DIN ISO 1302</b>		Denominazione description		ROTEX 42 GG 92° 1.0 Ø30 - 1A Ø48		CODICE / drawing number		1.905-879.0		Rev. 01



Materiale <i>material</i>	Stato <i>metalworking</i>		Scala <i>scale</i>	Disegnatore <i>drawn by</i>
Tratt. Superficiale <i>surface treatment</i>	Profondità <i>depth</i>		1:2	GP
Tratt. Termico <i>heat treatment</i>	Durezza <i>hardness</i>		mm	Visto <i>checked by</i>
Tolleranze generali / <i>general tolerances</i>		Vecchia Codifica <i>Old Part Number</i>	Foglio <i>sheet</i>	Data <i>date</i>
Tolleranze / <i>tolerances</i> <b>DIN ISO 8015</b> Superficie / <i>surface</i> <b>DIN ISO 1302</b>		2415.36	1 di 1	15/06/16
		Denominazione <i>description</i>	CODICE / <i>drawing number</i>	
		ROTEX 55 GG 92Sh-A 1.0 Ø40 - 1.0 Ø60	1.904-313.0	
			Rev. 00	





Materiale material	Stato metalworking		Scala scale 1:2	Disegnatore drawn by GP
Tratt. Superficiale surface treatment	Profondità depth mm		 dimensions in mm	Visto checked by
Tratt. Termico heat treatment	Durezza hardness HRc			
Tolleranze generali / general tolerances	Vecchia Codifica Old Part Number	2415.33	Sostituisce replaces	del date
	Foglio sheet	1	di of	1
	Data date	15/06/16		
Tolleranze / tolerances <b>DIN ISO 8015</b> Superficie / surface <b>DIN ISO 1302</b>	Denominazione description	CODICE / drawing number		Rev.
	ROTEX 42 GG 92° 1.0 Ø30 - 1A Ø55	9.853-336.0		00