

WHEELBLASTER

- ✓ Polished stainless steel (INOX)
- ✓ With mounting plate
- ✓ 4 nozzles inlets
- ✓ High quality swivel



Mosmatic Wheelblaster are a versatile and highly effective cleaning solution for almost any style vehicle or equipment cleaning. The rotation speed is determined by the water and pressure which drives the rotor arm. These products are mainly found in automatic car wash facilities in the area of tire/rim and rocker panel cleaning. It is an efficient and reliable touch free method of achieving optimal cleaning results.



WBL ø520mm

Part No.	Swivel	Rotor Arm	Weight
84.502	DYF	400/250 mm	7.2kg
84.512	DYF	470/350 mm	7.3kg
84.507	DYT	400/250 mm	8.4kg
84.517	DYT	470/350 mm	8.5kg

Requires 4x HP nozzles, please order separate

DYF: triple-bearing system, DYT: quadruple bearing system

TECHNICAL DATA

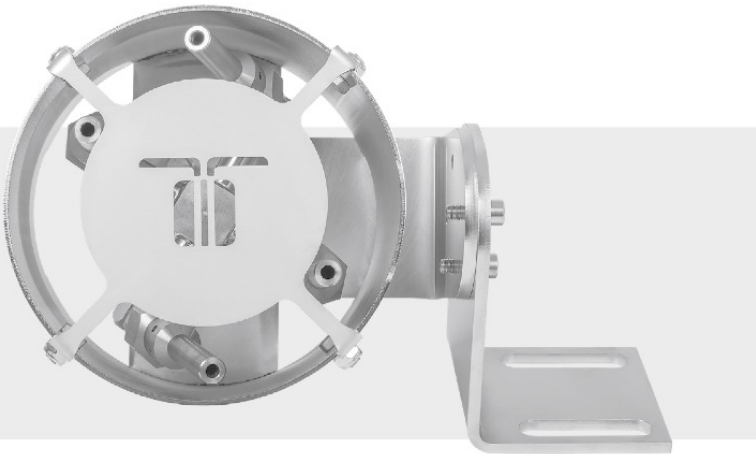
Pressure	275 bar (27.5 MPa)
Temperature	120°C
RPM	up to 2000 rpm
Water connection	G3/8" F
Nozzle connection	4x 1/8" NPTF
Throughput medium	pH 3-12

WHEELBLASTER COMPACT

- ✓ Equipped with stabilizer nozzles
- ✓ Assembly on both sides possible
- ✓ Flexible installation options
- ✓ Adjustable spray direction
- ✓ Polished stainless steel (INOX)



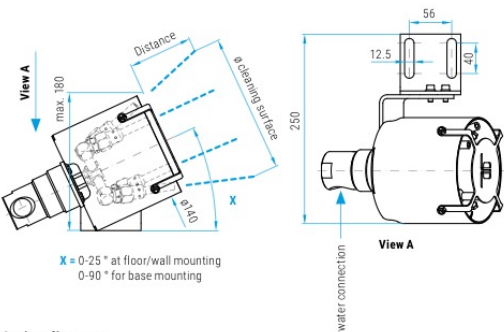
Due to the very compact design, this wheelblaster is ideal for installs where there is only limited space. The unit comes equipped with four stabilizer nozzles. These stabilizer nozzles increase distance and impact and the spray direction is adjustable to achieve optimal cleaning. Choose the correct EG nozzle to match your pump.



WBC

Part No.	Swivel	Rotor arm	Stabilizer Nozzles	Insert Nozzle	Weight
84.604	DYTs	100x100 mm	4x 14.902	--- *	4.1 kg

* Requires 4x EG-nozzles, according to your pump specifications



Action diameter

Distance	Cleaning surface
250 mm	300 mm
500 mm	500 mm
750 mm	700 mm
1000 mm	830 mm



Stabilizer Nozzle

(without insert nozzle)

Part No.	IN
14.902	1/8" NPTM

TECHNICAL DATA

Pressure	275 bar (27.5 MPa)
Temperature	120°C
RPM	up to 2000 rpm
Water connection	G3/4" F
Throughput medium	pH 3-12