



Barrel cleaner	454
easyfarm365+	444-446
foamblaster ST-76	446-450
kommunal365+	448-450
Long Cast nozzle	454
Long Cast lances	447
Mosmatic duct cleaner	455
Mosmatic manhole cleaner	455
ST-3500 high-flow spray guns	451
Suttner barrel cleaner	454
Suttner high pressure quick couplings ST-3100	448
Suttner high pressure spray guns	452
Suttner rotating nozzles ST-458.1 with ceramic insert	451
Suttner ultra high pressure lances	451
weeddevil® – Our new device for weed control	456

easyfarm365+



LTF

Professional gun with coupling KW.  
Max. 250 bar / 60 l/min / 150 °C

R+M Nr.		
202 620 655	coupling KW	1/2" F swivel



LTF

Professional gun with coupling ST-3100.  
Max. 250 bar / 60 l/min / 150 °C

R+M Nr.		
202 620 650	coupling ST-3100	1/2" F swivel

ST-340 swivels



1/4" F : 1/2" F



Repair kit ST-340

R+M Nr.
200 340 520

R+M Nr.
200 340 150

**LTF - Low Trigger Force** 90 % reduced holding force and 40 % reduced trigger force against usual market guns.

Grips



Grip for lances with  
moulded handle

R+M Nr.
200 009 700



Grip for ST-85  
Push & Pull lances

R+M Nr.
200 009 680

Protector ST-10



1/4" F. Plastic. Stainless  
steel

R+M Nr.
200 010 760

Suitable high pressure hoses are  
on page 148 and 155.

ST-85 Push & Pull lances



Plug KW. Lance stainless steel, vented handle ST-9 380 mm and nozzle protector ST-10 without nozzle. Variable adjustment of spraying angle from 20 to 140°. Especially designed for cleaning of places which are difficult to access. Max. 210 bar / 150 °C

R+M Nr.			
200 085 253	1/4" F NPT	600 mm	plug KW
200 085 613	1/4" F NPT	850 mm	plug KW
200 085 603	1/4" F NPT	1,000 mm	plug KW
200 085 653	1/4" F NPT	1,500 mm	plug KW

## easyfarm365+

### Lances



Plug KW. Lance stainless steel, moulded handle 400 mm and nozzle protector ST-10 with nozzle. Max. 400 bar / 150 °C

R+M Nr.	ISO	☉	☽	⊕
200 000 522	400 mm	1/4" F NPT	1,000 mm	plug KW



Plug KW. Lance stainless steel, moulded handle 300 mm, valve ST-54 aside and nozzle protector ST-10 with low pressure nozzle & thread 1/4" F. Max. 310 bar / 150 °C

R+M Nr.	ISO	☉	☽	⊕
200 054 507	300 mm	1/4" F NPT	980 mm	plug KW



Plug KW. Lance stainless steel, moulded handle 400 mm and 1/4" M thread for rotating nozzles. Lance without rotating nozzle. Max. 400 bar / 150 °C

R+M Nr.	ISO	☉	☽	⊕
200 000 523	400 mm	1/4" M	1,000 mm	plug KW

Symbols ☉ outlet ☽ inlet ⊕ length ISO insulation

## easyfarm365+

## Lances



Plug KW. Lance stainless steel, moulded handle 300 mm, valve ST-53 on top, nozzle protector ST-10 with low pressure nozzle and 1/4" M thread for rotating nozzles. Lance without rotating nozzle. Max. 250 bar / 150 °C

R+M Nr.	ISO	⊗	↔	Ⓒ
200 053 538	300 mm	1/4" M	980 mm	plug KW

## foamblaster ST-76

**The foamblaster ST-76 is designed for applications in agriculture, industry, municipal cleaning and fire fighting technology.**

There are injector nozzles with diameters of up to 2.8 mm for high flow rates available for all **easyfoam365+** stainless steel injectors ST-160, ST-164, ST-166 and ST-167.

Material: stainless steel / plastic.

Min. 70 bar for use in combination with an **easyfoam365+** injector unit. Min. 30 bar for use with water / foamagent premix.

Max. 250 bar / 20 - 60 l/min / 100 °C

R+M Nr.	D	Ⓒ
200 076 615	2.3 mm	1/2" F
200 076 618	2.6 mm	1/2" F
200 076 621	2.8 mm	1/2" F
200 076 600	2.9 mm	1/2" F
200 076 624	3.0 mm	1/2" F
200 076 630	3.3 mm	1/2" F
200 076 633	3.5 mm	1/2" F



## Longcast lances



3/8" F. Stainless steel. Longcast lance 350 mm with vented handle ST-29 Cool & Compact 330 mm, gun ST-2300, grip aside and nozzle protector made out of plastic without nozzle.  
Max. 280 bar / 45 l/min / 100 °C

R+M Nr.		
200 078 510	nozzle protector without nozzle	3/8" F



1/2" F. Stainless steel. Longcast lance 350 mm with vented handle ST-29 Cool & Compact 330 mm, gun ST-2320, grip aside and nozzle protector made out of plastic without nozzle.  
Max. 150 bar / 80 l/min / 100 °C

R+M Nr.		
200 078 520	nozzle protector without nozzle	1/2" F



1/2" F. Stainless steel. Longcast lance 350 mm with vented handle ST-29 Cool & Compact 330 mm, gun **easyfarm365+**, grip aside and nozzle protector made out of plastic without nozzle.  
Max. 250 bar / 60 l/min / 100 °C

R+M Nr.		
200 078 530	nozzle protector without nozzle	1/2" F swivel



1/4" M. Stainless steel. Longcast lance 350 mm with vented handle ST-29 Cool & Compact 330 mm, grip aside and nozzle protector made out of plastic without nozzle.  
Max. 280 bar / 130 l/min / 100 °C

R+M Nr.		
200 078 500	nozzle protector without nozzle	1/4" M

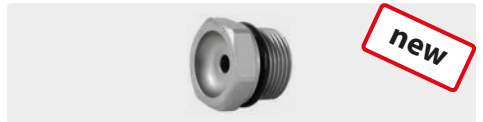
The longcast lance can be connected to a low pressure pump, to a high pressure pump, to the public water system or to the extinguishing water network.

The lance works in the medium pressure range. By means of its very good solidity, good handling and compactness the lance is especially suitable for the intensive use.

The lateral hand grip makes a stepless adjustment of the water jet during the operation possible. A long casting point jet or a progressive, conical spray jet can be set.

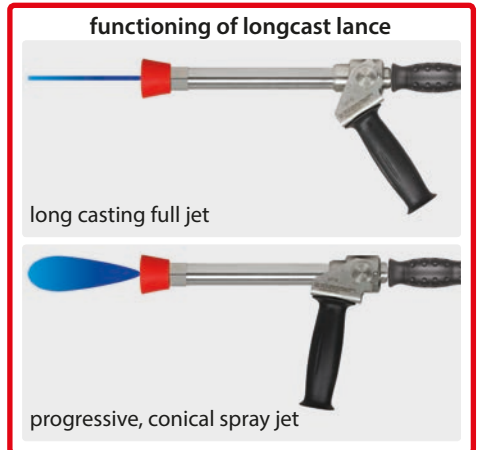
In order to realize ideal cleaning results the nozzle size needs to be adapted to the pump performance (pressure and water quantity).

### Nozzles for longcast lances



M15x1 M. Stainless steel

R+M Nr.	D
200 078 412	1.2 mm
200 078 415	1.5 mm
200 078 420	2.0 mm
200 078 423	2.3 mm
200 078 425	2.5 mm
200 078 430	3.0 mm
200 078 435	3.5 mm



long casting full jet

progressive, conical spray jet

**kommunal365+**



Professional gun.  
Max. 150 bar / 80 l/min / 150 °C

R+M Nr.		
202 320 500	1/4" F	1/2" F



Professional gun.  
Max. 150 bar / 80 l/min / 150 °C

R+M Nr.		
202 320 510	1/2" F	1/2" F



Professional gun.  
Max. 150 bar / 80 l/min / 150 °C

R+M Nr.		
202 320 520	1/2" F	1/2" F swivel

**ST-340 swivels**



1/4" F : 1/2" F

R+M Nr.
200 340 520



Repair kit ST-340

R+M Nr.
200 340 100

**Seal kits**



R+M Nr.
202 320 495

**Shoulder supports**



New European Union guidelines imperatively prescribe the use of shoulder supports for cleaning applications exceeding an operating reaction force of 150 N.

R+M Nr.
202 705 590

**Grips**



Grip for lances with moulded handle

R+M Nr.
200 009 700



Grip for ST-85 Push & Pull lances

R+M Nr.
200 009 680

**Protector ST-10**



ST-10. 1/4" F.  
Plastic.  
Stainless steel

R+M Nr.
200 010 755

Suitable high pressure hoses are in chapter 07.

**Suttner high pressure quick couplings ST-3100**

**Couplings and plug ST-3100**



Coupling : F.  
Stainless steel.  
Max. 250 bar / 150 °C



Coupling : M.  
Stainless steel. 60° cone.  
Max. 250 bar / 150 °C



Plug : F. Stainless steel.  
Max. 250 bar / 150 °C



Plug : M.  
Stainless steel. 60° cone.  
Max. 250 bar / 150 °C

1/4"	10
3/8"	12
1/2"	12

R+M Nr.	
203 100 466	44 mm
203 100 461	44 mm
203 100 460	44 mm

R+M Nr.	
203 100 655	45 mm

R+M Nr.	
040 005 665	35 mm
040 005 667	41 mm
040 005 661	47 mm

R+M Nr.	
040 005 668	47 mm
040 005 662	47 mm



## kommunal365+

### ST-85 Push & Pull lances



Plug ST-3100. Lance stainless steel, vented handle ST-9 380 mm and nozzle protector ST-10 with nozzle. Variable adjustment of spraying angle from 20 to 140°. Especially designed for cleaning of places which are difficult to access. Max. 210 bar / 150 °C

R+M Nr.	ISO	⊖	⊕	Ⓢ
200 085 251		1/4" F NPT	600 mm	plug ST-3100
200 085 611		1/4" F NPT	850 mm	plug ST-3100
200 085 601		1/4" F NPT	1,000 mm	plug ST-3100
200 085 651		1/4" F NPT	1,500 mm	plug ST-3100

### Lances



Plug ST-3100. Lance stainless steel, moulded handle 400 mm and nozzle protector ST-10 with nozzle. Max. 400 bar / 150 °C

R+M Nr.	ISO	⊖	⊕	Ⓢ
200 000 520	400 mm	1/4" F NPT	1,000 mm	plug ST-3100



Plug ST-3100. Lance stainless steel, moulded handle 300 mm, valve ST-54 aside and nozzle protector ST-10 with low pressure nozzle & thread 1/4" F. Max. 310 bar / 150 °C

R+M Nr.	ISO	⊖	⊕	Ⓢ
200 054 506	300 mm	1/4" F NPT	980 mm	plug ST-3100

Symbols ⊖ outlet ⊕ inlet ⊕ length ISO insulation ⊖ thread DN nominal diameter ↓ height

## kommunal365+

## Lances



Plug ST-3100. Lance stainless steel, moulded handle 400 mm and 1/4" M thread for rotating nozzles. Lance without rotating nozzle. Max. 400 bar / 150 °C

R+M Nr.	ISO	⊖	↔	Ⓢ
200 000 521	400 mm	1/4" M	1,000 mm	plug ST-3100



Plug ST-3100. Lance stainless steel, moulded handle 300 mm, valve ST-53 on top, nozzle protector ST-10 with low pressure nozzle and 1/4" M thread for rotating nozzles. Lance without rotating nozzle. Max. 250 bar / 150 °C

R+M Nr.	ISO	⊖	↔	Ⓢ
200 053 537	300 mm	1/4" M	980 mm	plug ST-3100

## foamblaster ST-76

**The foamblaster ST-76 is designed for applications in agriculture, industry, municipal cleaning and fire fighting technology.**

There are injector nozzles with diameters of up to 2.8 mm for high flow rates available for all **easyfoam365+** stainless steel injectors ST-160, ST-164, ST-166 and ST-167.

Material: stainless steel / plastic.

Min. 70 bar for use in combination with an **easyfoam365+** injector unit. Min. 30 bar for use with water / foamagent premix.

Max. 250 bar / 20 - 60 l/min / 100 °C

R+M Nr.	D	Ⓢ
200 076 615	2.3 mm	1/2" F
200 076 618	2.6 mm	1/2" F
200 076 621	2.8 mm	1/2" F
200 076 600	2.9 mm	1/2" F
200 076 624	3.0 mm	1/2" F
200 076 630	3.3 mm	1/2" F
200 076 633	3.5 mm	1/2" F





## Suttner rotating nozzles ST-458.1 with ceramic insert

ST-458.1



1/4" F. Spray angle 20°.  
120 - 250 bar. Max. 100 °C

R+M Nr.	D
200 458 811	11
200 458 812	12
200 458 815	15
200 458 820	20
200 458 825	25
200 458 830	30

Kit ST-458.1

R+M Nr.
200 458 311
200 458 312
200 458 315
200 458 320
200 458 325
200 458 330

## ST-3500 high-flow spray guns



Professional high-flow gun. Stainless steel.  
Industrial high pressure cleaning and jetting gun  
for municipal cleaning and other industrial cleaning  
tasks. Valve piston hardened stainless steel.  
Max. 350 bar / 200 l/min / 150 °C

R+M Nr.	☺	☹
203 500 500	1/2" F	1/2" F



Professional high-flow gun. Stainless steel.  
Industrial high pressure cleaning and jetting gun  
for municipal cleaning and other industrial cleaning  
tasks. Valve piston hardened stainless steel. Swivel  
stainless steel. Max. 350 bar / 200 l/min / 150 °C

R+M Nr.	☺	☹
203 500 550	1/2" F	1/2" F swivel

## Suttner ultra high pressure lances

Ultra high pressure lances ST-3600 - 600 bar



1/2" M. Lance with grip. Max. 600 bar / 150 °C

R+M Nr.	☺	☹	☹	☹	M
203 600 416	1/2" M	1,500 mm	1/2" M		stainless steel
203 600 415	1/2" M	2,000 mm	1/2" M		stainless steel

R+M Nr.



1/2" M. Lance with grip and sleeve 1/4" F NPT stainless steel without high pressure nozzle. Max. 600 bar / 150 °C

R+M Nr.	☺	☹	☹	☹	M
203 600 400	1/4" F NPT	500 mm	1/2" M		stainless steel
203 600 401	1/4" F NPT	800 mm	1/2" M		stainless steel
203 600 402	1/4" F NPT	1,000 mm	1/2" M		stainless steel

R+M Nr.



1/2" M. Lance with grip for rotating nozzles with 1/4" F (without rotating nozzle). Max. 600 bar / 150 °C

R+M Nr.	☺	☹	☹	☹	M
203 600 411	1/4" M	500 mm	1/2" M		stainless steel
203 600 410	1/4" M	800 mm	1/2" M		stainless steel
203 600 412	1/4" M	1,000 mm	1/2" M		stainless steel

R+M Nr.

Symbols ☺ outlet ☹ inlet ☹ length ISO insulation M material D nozzle

Suttner high pressure spray guns

ST-2635 Industrial



Professional gun. Patented valve kit. Especially wear-resistant ball made out of carbide. Swivel made of stainless steel.  
Max. 400 bar / 35 l/min / 150 °C

R+M Nr.		
202 635 550	1/4" F	3/8" F swivel



Professional gun with coupling KW. Patented valve kit. Especially wear-resistant ball made out of carbide. Swivel made of stainless steel. Coupling KW made of stainless steel.  
Max. 400 bar / 35 l/min / 150 °C

R+M Nr.		
202 635 570	coupling KW	3/8" F swivel



Professional gun with insulated outlet suitable for lances with swivel screw coupling. Patented valve kit. Especially wear-resistant ball made out of carbide. Swivel made of stainless steel.  
Max. 400 bar / 35 l/min / 150 °C

R+M Nr.		
202 635 720	M22 M	M22 M swivel

ST-311 swivels



1/4" F : 3/8" F

R+M Nr.
200 311 050



1/4" F : M22 M

R+M Nr.
200 311 060



Repair kit ST-311

R+M Nr.
200 300 100

Suitable lances are on pages 232 - 247.

LTF+ - Low Trigger Force + 90 % reduced holding force and 55 % reduced trigger force against usual market guns.

Micro Droplets Nozzle Holder

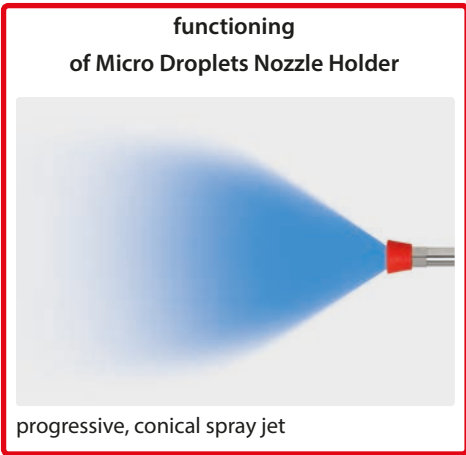
Fields of application:

Disinfection, humidification, cooling, dust suppression, decontamination, odor control in agricultural, food and construction industry, defence and firefighting technology, car washing and detailing

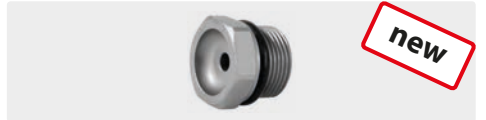


ST-78. Stainless steel

R+M Nr.	
200 078 830	1/4" F



Nozzles for Micro Droplets Nozzle Holder



M15x1 M. Stainless steel

R+M Nr.	
200 078 412	1.2 mm
200 078 415	1.5 mm
200 078 420	2.0 mm
200 078 423	2.3 mm
200 078 425	2.5 mm
200 078 430	3.0 mm
200 078 435	3.5 mm

## Suttner tank cleaner

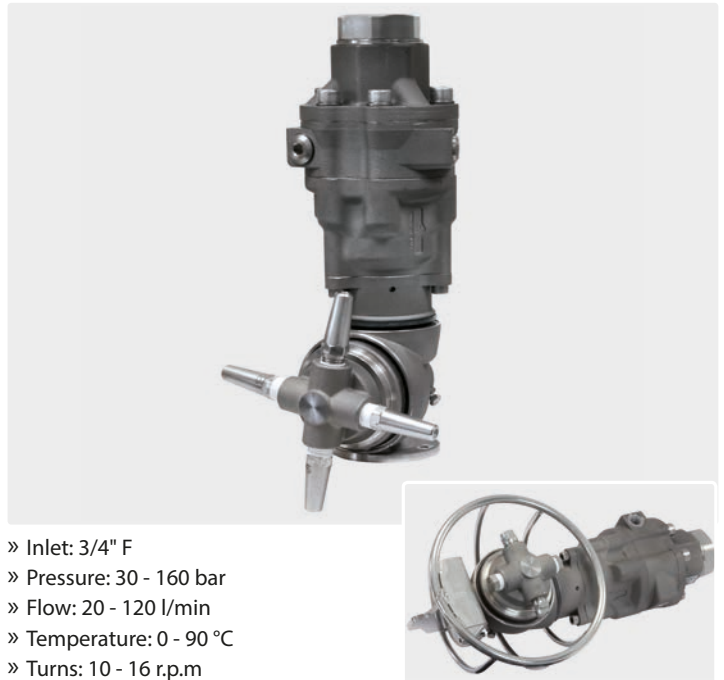
ST-82 h16/40 self rotating tank cleaner



- » Inlet: 1/2" F
- » Pressure: 40 - 160 bar
- » Flow: 20 - 30 l / min
- » Temperature: 0 - 90 °C
- » Turns: 29 - 36 r.p.m
- » Beam coverage 244°
- » Weight: 3,6 kg
- » 3 nozzles needed 1/8" M NPT
- » Other versions on request 20-50 l/min

R+M Nr.	D	☰	P
200 082 600	basic version without nozzle		
200 082 601	3 x 060	40 l/min	100 bar
200 082 602	3 x 030	21 l/min	110 bar
200 082 606	3 x 035	25 l/min	110 bar
200 082 605	3 x 035	27 l/min	125 bar
200 082 603	3 x 040	30 l/min	140 bar
200 082 604	3 x 050	40 l/min	140 bar

ST-82 h16/120 self rotating tank cleaner



- » Inlet: 3/4" F
- » Pressure: 30 - 160 bar
- » Flow: 20 - 120 l/min
- » Temperature: 0 - 90 °C
- » Turns: 10 - 16 r.p.m
- » Beam coverage 360°
- » Weight: 5,9 kg
- » 2 nozzles and 2 caps needed, max. 4 nozzles 1/4 " M NPT

R+M Nr.	D	☰	P
200 082 717	2 x 110	42 l/min	70 bar
200 082 713	2 x 120	50 l/min	80 bar
200 082 722	4 x 130	105 l/min	85 bar
200 082 701	2 x 075	34 l/min	100 bar
200 082 709	4 x 050	45 l/min	100 bar
200 082 708	2 x 110 *	48 l/min	100 bar
200 082 723	4 x 055	50 l/min	100 bar
200 082 705	4 x 055 *	50 l/min	100 bar
200 082 721	2 x 045	20 l/min	100 bar
200 082 702	2 x 060	27 l/min	100 bar
200 082 729	2 x 090	42 l/min	100 bar
200 082 727	4 x 090	85 l/min	110 bar
200 082 724	2 x 050	24 l/min	115 bar
200 082 703	2 x 045	22 l/min	120 bar
200 082 726	2 x 045 *	22 l/min	120 bar
200 082 710	4 x 045	42 l/min	120 bar
200 082 716	4 x 070	67 l/min	120 bar
200 082 728	4 x 110 *	110 l/min	120 bar
200 082 719	2 x 040	20 l/min	125 bar
200 082 720	2 x 040 *	20 l/min	125 bar
200 082 712	2 x 050	25 l/min	130 bar
200 082 704	2 x 040	21 l/min	140 bar
200 082 725	2 x 050 *	27 l/min	140 bar
200 082 706	2 x 060	32 l/min	140 bar
200 082 711	4 x 040 *	40 l/min	140 bar
200 082 714	-	50-60 l/min	140 bar
200 082 715	2 x 055	28 l/min	140 bar
200 082 718	2 x 065 *	35 l/min	140 bar
200 082 707	4 x 040	45 l/min	160 bar

\* with protection cage

**Please specify pressure & flow rate  
with your order.  
The tank cleaner are individually  
assembled to your needs.**

**Suttner barrel cleaner**

ST-82 e25 / 21 power-operated barrel cleaner CE



- » Inlet: M22 M
- » Pressure: max. 220 bar
- » Flow: max. 21 l/min
- » Temperature: 0 - 90 °C
- » Electric motor: 12 V =
- » Power supply: 230 V / 50 Hz
- » 10 m cable with plug
- » Beam coverage 360°
- » Weight: 3.2 kg
- » Nozzles are included in the scope of delivery

<b>R+M Nr.</b>
200 082 500

**Barrel cleaner**

M 28 E power-operated barrel cleaner with exhaust + CE



- » Inlet: M22 M
- » Pressure: max. 140 bar
- » Flow: 10 - 25 l/min
- » Temperature: 0 - 90 °C
- » Electric motor: 12 V =
- » Power supply: 230 V / 50 Hz
- » 10 m cable with plug
- » Beam coverage 360°
- » Weight: 6.2 kg
- » Nozzles are included in the scope of delivery

<b>R+M Nr.</b>
276 284 380

**Long Cast Nozzle**

- » Stainless steel
- » Applications: cleaning of shafts
- » Extremely high impact force
- » Long reach
- » Nozzle protection
- » Max. 500 bar / 150 °C

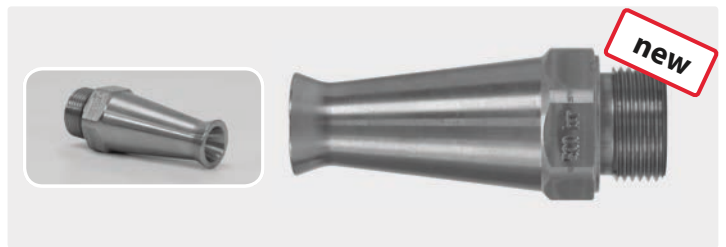
<b>R+M Nr.</b>		
040 001 963	5 mm	3/4" M

Industrial high-flow gun ST-3500, lance 500 mm with side handle. Long Cast Nozzle.  
Max. 350 bar / 200 l/min / 150 °C

**Application:**

- » Man hole cleaning
- » Paper Industry. Removal of snow balls during fibre jetting
- » Cleaning Tasks in Off-Shore or Marine Applications

<b>R+M Nr.</b>		
203 500 560	750 mm	1/2" F swivel



## Mosmatic manhole cleaner

### Manhole cleaner TXS-2f



Inlet 1/2" F. Max. 170 bar / 120 °C

R+M Nr.	∅	⊞
108 810 33	300 mm	3.7 kg
108 810 43	400 mm	4.4 kg
108 810 53	500 mm	5.3 kg

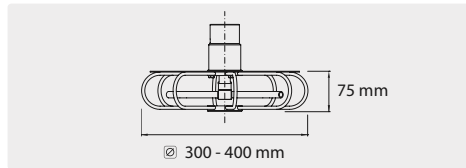
Mosmatic manhole cleaner TXS-2f with protective plate

Cleans ducts and manholes and realizes cleaning results like never before. The cleaner is self-rotating and very easy in its handling. By means of a protective plate the manhole cleaner and the user profit from extra protection.

Completely made of stainless steel.

Nozzles are excluded. 2 nozzles 1/8" M are required.

Further versions are available on request.



## Mosmatic duct cleaner

Cleans ducts, tanks and every kind of container and realizes results like never before. Even the strongest dirt will be removed.

Depending on the kind of application you can either choose the fixed version having fixed horizontal rotor arms or the adjustable version. The angle of the rotor arms at the adjustable model can be changed thus varying the cleaning power.

The duct cleaner is equipped with a standard stainless steel cage protecting and prolonging the life of the rotor arm inside.

The field of application is almost unlimited. Mobile lavatories, drains, chimneys, rubbish chutes, ducts, tanks, container etc.

Further versions are available on request.

### TYR 2s



TYR-2s adjustable. Duct cleaner with adjustable rotor arms for a variable spraying angle.

Completely rust-free. Inlet 3/8" F. Nozzles are excluded.

2 nozzles 1/8" M are required.

Max. 275 bar / 120 °C

R+M Nr.	∅	⊞
108 815 02	75 mm	0.5 kg
108 815 22	150 mm	0.8 kg
108 815 52	300 mm	1.1 kg

### TYR 2f



TYR-2f fixed. Duct cleaner with straight rotor arms for a horizontal spraying angle. Ideal for the cleaning of vertical chutes. Completely rust-free.

Inlet 3/8" F. Nozzles are excluded.

2 nozzles 1/8" M are required.

Max. 275 bar / 120 °C

R+M Nr.	∅	⊞
108 814 02	75 mm	0.5 kg
108 814 22	150 mm	1.0 kg
108 814 52	300 mm	1.3 kg



### Adapter



3/8" M : M18 F. Stainless steel

R+M Nr.
040 001 125

Symbols ∅ diameter ⊞ weight ⇄ length



**weeddevil® – Our new device for weed control**

- » Ideal for professional service provider in the garden-, municipal and building cleaning industry
- » Completely made out of stainless steel
- » For hot water use of up to 120 °C, 0 - 350 bar
- » Suitable for low and high pressure applications
- » A working width of 400 mm
- » 1/4" nozzles have the ideal spraying angle of 65°

» swivelling application on sloping and vertical areas is possible

**Completely chemical-free!**



**weeddevil®**



ST-2605

**LTF**

Our spray gun ST-2605 with the patented LTF technology is recommended for effortless working.



4 nozzles 1/4" M NPT are required

**At the underside:** concentrated and well-directed hot water without any temperature loss by an optimally designed housing having a perfect application distance.



**Useable at the left or right:** the handle at the side optimises the handling and protects within hot water applications.

4 nozzles 1/4" M are required. 2 robustly industrial castors (260 mm). Max. 120 °C

R+M Nr.	M	castors ∅	working-↔	Ⓒ	↺	P	°C	⊞	I / ↔
200 097 700	stainl. steel	260 mm	400 mm	1/4" F	4 x 1/4" F	max. 350 bar	120 °C	7.4 kg	1,250 / 530 mm

**Accessories thermometer**



Easy mounting with counter plate and screws (incl.), or with back spring

R+M Nr.	
200 097 420	

**Accessories flow restrictor**



Flow restrictor for water reduction. Incl. adapter and nozzles (1,0, 1,1, 1,2, 1,3, 1,4)

R+M Nr.	Ⓒ	↺
200 097 750	1/4" M	1/4" M / M22 F

**Symbols** M material ∅ diameter Ⓒ inlet ↺ outlet ↔ width I height °C temperature ⊞ weight