

The WS-Series



To wall mounting

To wall mounting

Protection cover

Heat protection

Total-stop system

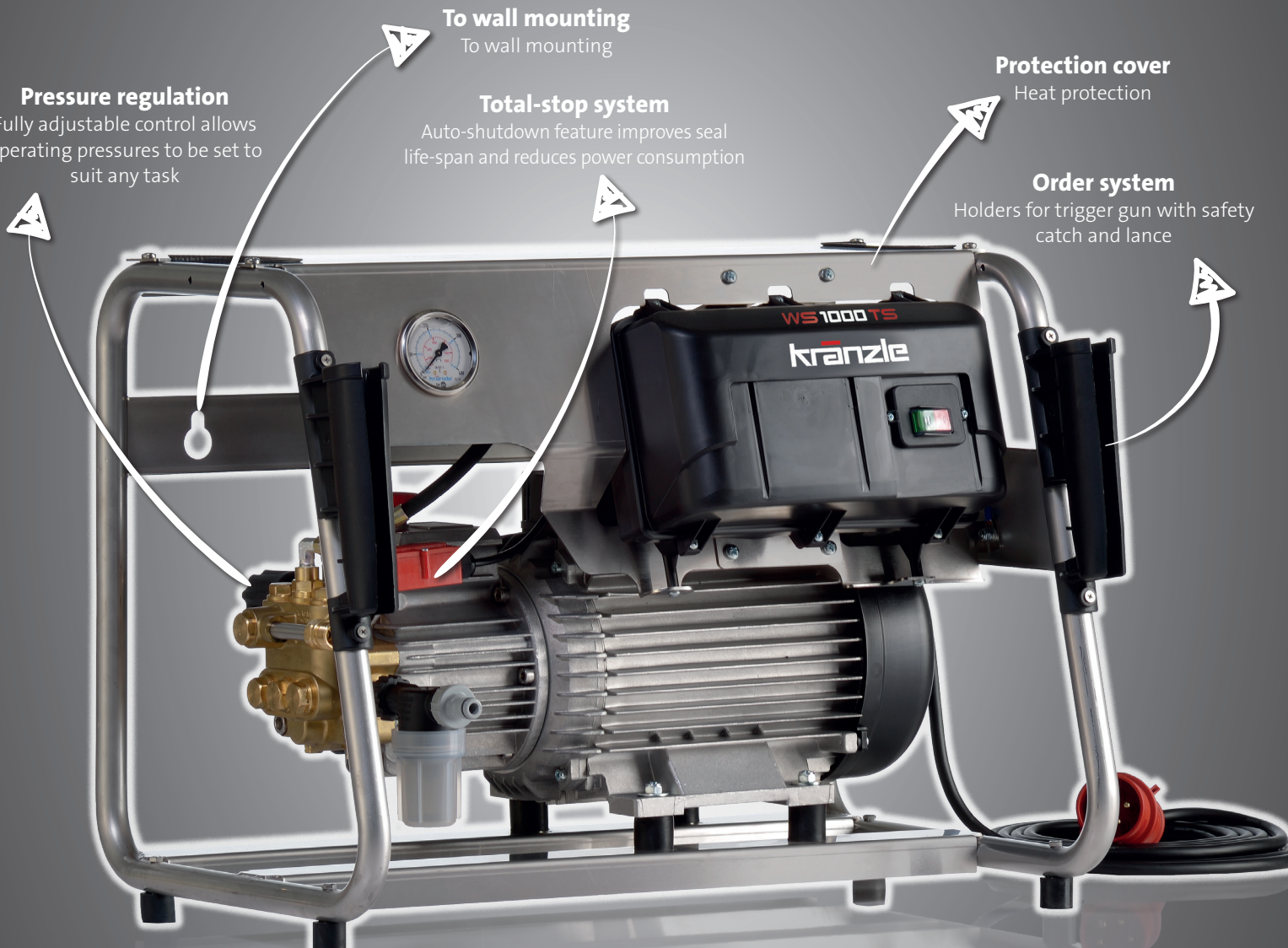
Auto-shutdown feature improves seal life-span and reduces power consumption

Order system

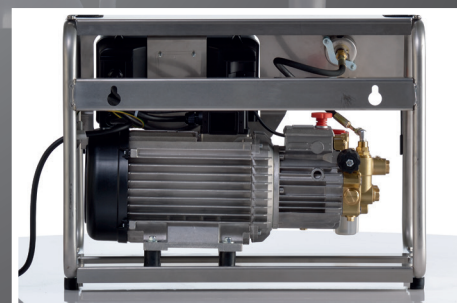
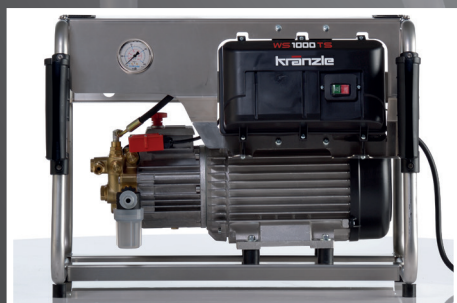
Holders for trigger gun with safety catch and lance

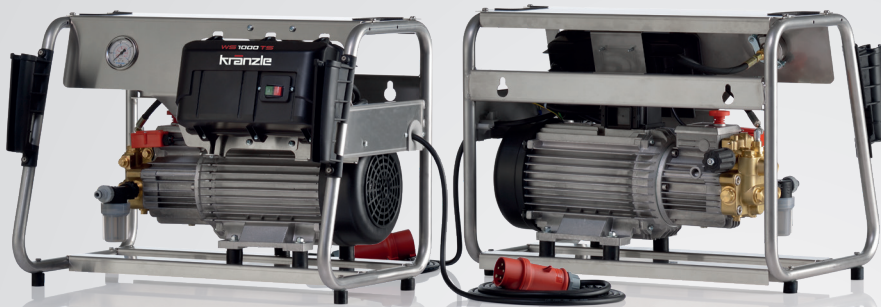
Pressure regulation

Fully adjustable control allows operating pressures to be set to suit any task



Figures: WS 1000 TS





		WS 800 TS	WS 1000 TS	WS 1200 TS
Technical specifications				
Operating pressure adjustable	bar / MPa	30-250 / 3-25	30-200 / 3-20	30-180 / 3-18
Max. admissible overpressure	bar / MPa	270 / 27	230 / 23	200 / 20
Connected load	V / ~ / Hz / A	400 / 3 / 50 / 12	400 / 3 / 50 / 12	400 / 3 / 50 / 12
Motor speed	Rpm	1400	1400	1400
Water output	l/min l/h	13.3 798	16 960	19 1140
Power intake / Power output	kW kW	7.5 5.5	7.5 5.5	7.5 5.5
Power supply cable	m	7.5	7.5	7.5
Dimensions L x W x H	mm	670 / 430 / 510	670 / 430 / 510	670 / 430 / 510
Weight	kg	62	62	62
Cleaning Agent Intake		-	-	-
Equipment				
Hose drum		-	-	-
Steel braided high-pressure hose	m	10	10	10
Trigger gun with safety catch	Model	Starlet	Starlet	Starlet
Stainless steel lance with flat jet nozzle	Nozzle size	● 04	● 05	● 07
Ord.no.		4131300	4131310	4131320

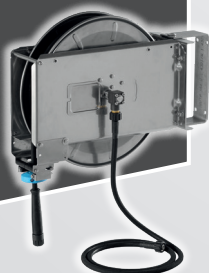
TECHNICAL HIGHLIGHTS!

AUTOMATIC HOSE REEL - SET

Automatic hose reel - Set for the ideal usage of the WS series as wall unit.

- Hose drum made of stainless steel
- Swivelling wall holder
- Connecting hose 2 m

For more on this, see page 59 (Hose drums / Retrofitting sets)



For detailed technical information, see page 80