

DATA SHEET

IEC BELL HOUSING AND FLEXIBLE COUPLINGS

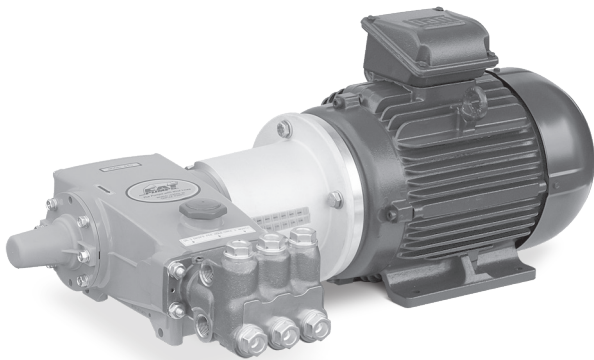


**Bell Housing
Models:**

76IEC132.15FR, 76IEC180.15FR

**Flexible Coupling
Models:**

8384, 8385, 8386



Bell housing and flexible coupling assembly shown with Model 660 and electric motor. Pump and motor sold separately.

FEATURES

- Eliminates belt selection, sizing and adjusting.
- Compact direct mounting feature reduces space required for belts or gearbox drive assemblies.
- Insulates against heat transfer.
- Special urethane flexible spyder designed for extended life with high temperature and high RPM.
- Complete assembled units from Cat Pumps includes pump, shaft protector, bell housing, bell housing protective covers, flange adapters, flexible coupler, mounting hardware and motor.
- Designed to fit 15 and 18 frame pumps

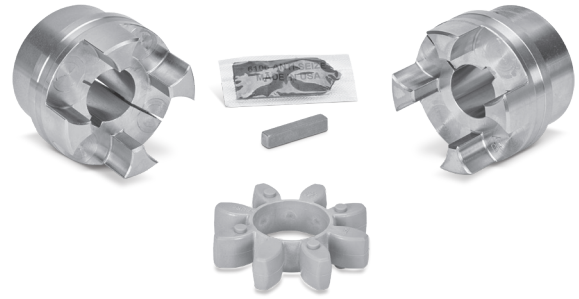
PART NUMBERS

8384 Flexible Coupler Assembly

Pump Series	Motor Frame	Flex Coupler Assy	Shaft to Shaft	Torque Rating	Weight
15 & 18FR	132IEC	8384	M30 to M38	203Nm	6.18 lbs

PART NUMBERS

Coupler Half, Motor – M38 Shaft, 10mm Keyway	996695
Coupler Half, Pump – 30mm Shaft, 8mm Keyway	996672
Spyder (Purple)	31544
Key, Pump	990036



8385 Flexible Coupler Assembly

Pump Series	Motor Frame	Flex Coupler Assy	Shaft to Shaft	Torque Rating	Weight
15 & 18FR	160IEC	8385	M30 to M42	305Nm	10.16 lbs

PART NUMBERS

Coupler Half, Motor – M42 Shaft, 12mm Keyway	996696
Coupler Half, Pump – 30mm Shaft, 8mm Keyway	996692
Spyder (Purple)	996694
Key, Pump	990036

8386 Flexible Coupler Assembly

Pump Series	Motor Frame	Flex Coupler Assy	Shaft to Shaft	Torque Rating	Weight
15 & 18FR	180IEC	8386	M30 to M48	305Nm	9.80 lbs

PART NUMBERS

Coupler Half, Motor – M48 Shaft, 14mm Keyway	996697
Coupler Half, Pump – 30mm Shaft, 8mm Keyway	996692
Spyder (Purple)	996694
Key, Pump	990036

Bell Housing Assemblies

Pump Series	Models	Motor Frame	Part Number
15 & 18FR	640, 650 660, 661C, 661D 1050	132IEC	76IEC132.15FR
	1051, 1051C, 1051D, 1057 1530, 1530C, 1531		
	1540E, 1540EC, 1541, 1541C		
	1560	160IEC – 180IEC	76IEC180.FR
	1570		
	1580		
	1810, 1810K		

Bell Housing Assemblies include bell housing, flange adapter, protective covers and mounting hardware.



INSTALLATION

Bell Housing and Flexible Coupler

1. Separate the parts included in the bell housing assembly package and/or flexible coupler assembly package. Both assemblies offer separate kits to cover the various motor frames and pump models.
2. Remove bearing cover screws from extended shaft side of pump and discard screws. New screws are supplied in bell housing assembly.
3. On the pump side, slide the small end of the bell housing over the pump shaft with the Cat Pumps logo facing up and positioned 22° from the top.
4. Install eight (8) conical lock washers to eight (8) M8 screws. Apply Loctite® 242® to the threads of the screws provided in the assembly and torque to specifications per chart.
5. Apply a light film of anti-seize lubricant to the pump shaft.
6. Install key into pump shaft.
7. Separate the pump M30 half of the flexible coupling and slide onto the pump shaft. Seat completely against the step in crankshaft.
8. On the IEC 32 frames, mount flange adapter with counter-bore holes facing away from motor.
9. Install four (4) M10 screws and torque to specifications per chart. Go to step 12.
10. On the IEC 160/180 frames, mount flange adapter with raised and finished surface away from motor.
11. Install four (4) M16 screws through offset holes on the flange adapter and motor flange. Install four (4) lock washer onto M16 screws. Hand thread four (4) M16 nuts on backside and torque to specification per chart.
12. Slide the M38, M42 or M48 half (motor side) of the flexible coupling with spyder onto the electric motor shaft.
13. Apply a light film of anti-seize lubricant to the motor shaft.
14. Install motor key (as supplied with motor) into motor keyway.
15. Mount pump with bell housing and coupling half to motor shaft with coupling half. Ensure the two halves are aligned properly.
16. Install four (4) lock washers onto four (4) M12 screws. Apply Loctite® 242® to the threads of the screws.
17. Install four (4) M12 screws through flange adapter into motor. Torque to specifications per chart.
18. Insert 6mm allen wrench through bell housing slot openings into each M8 screw and torque to specifications per chart.
19. Install yellow protector covers into each bell housing slot. Trim to fit.

NOTE: Flexible coupler halves should not contact each other. Ensure there is a small gap between coupler halves.

Loctite and 242 are registered trademarks of the Henkel Corporation.

Torque Specifications Chart

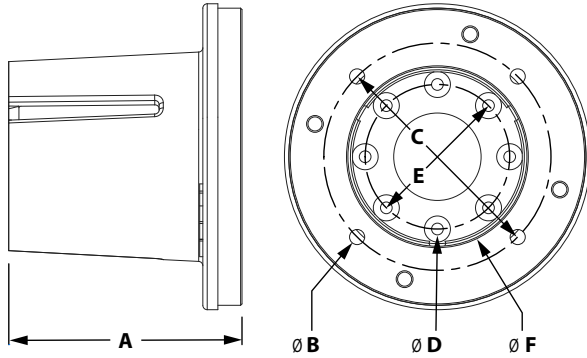
Screw	Size	Tool	Nm	ft/lbs	in/lbs
Bell Housing to Pump	M8	5mm Allen	12.5	9.6	115
Flange Adapter to Motor (76IEC132.15FR)	M10	8mm Allen	20	15	180
Flange Adapter to Motor (76IEC180.15FR)	M16	24mm Wrench	136	100	1200
Bell Housing to Flange Adapter	M12	10mm Allen	34	25	300
Flexible Coupler Clamping Screws	M8	6mm Allen	34	25	300
	M10	8mm Allen	68	50	600

DIMENSIONAL DRAWINGS

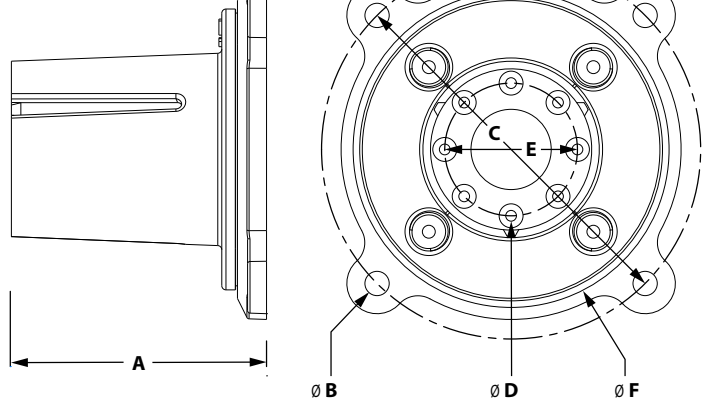
Bell Housing Assemblies

Model	Motor Frame	A	Ø B	QTY	C (BC)	Ø D	QTY	E (BC)	Ø F
76IEC132.15FR	IEC132	169.5mm	11.0mm	4	165mm	8.5mm	8	105 mm	130mm
76IEC180.15FR	IEC160, IEC180	202mm	20.0mm	4	300mm	8.5mm	8	105mm	250mm

76IEC132.15FR

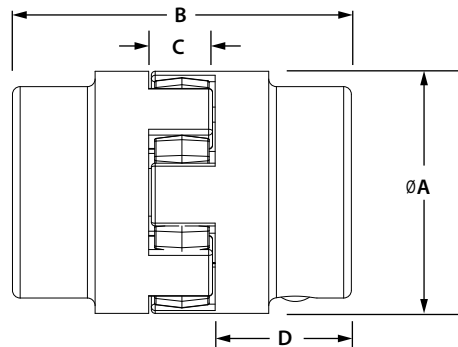
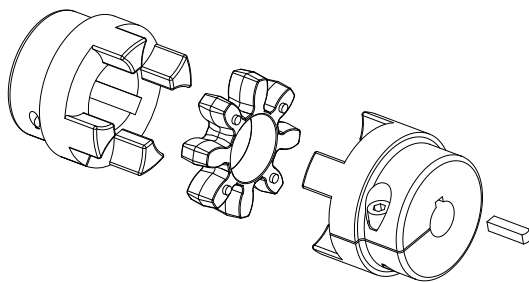


76IEC180.15FR



Flexible Coupling Assemblies

Model	Ø A	B	C	D
8384	80mm	112mm	22mm	45mm
8385	95mm	126mm	26mm	50mm
8386	95mm	126mm	26mm	50mm



⚠ CAUTIONS AND WARNINGS

All High-Pressure Systems require a primary pressure regulating device (i.e. regulator, unloader) and a secondary pressure relief device (i.e. pop-off valve, relief valve). Failure to install such relief devices could result in personal injury or damage to pump or property. Cat Pumps does not assume any liability or responsibility for the operation of a customer's high-pressure system.

Read all CAUTIONS and WARNINGS before commencing service or operation of any high-pressure system. The CAUTIONS and WARNINGS are included in each service manual and with each Accessory Data Sheet. CAUTIONS and WARNINGS can also be viewed online at www.catpumps.com/cautions-warnings or can be requested directly from Cat Pumps.

WARRANTY

View the Limited Warranty on-line at www.catpumps.com/warranty.